

# PHOTOMETRIC TEST REPORT

---

BOSTON 600 BRONZE

astro

## LIGHT EFFICIENCY:

42 Lumen/Watt

## LIGHT QUALITY:

CRI: 94.4

## COLOR TEMPERATURE:

2989 K

OUTPUT: 780 lm

PEAK: 179 cd

POWER: 18.5 W

PF: 0.78

Tracking number: [n/a](#)

Product name:

Boston 600 Bronze

Item number:

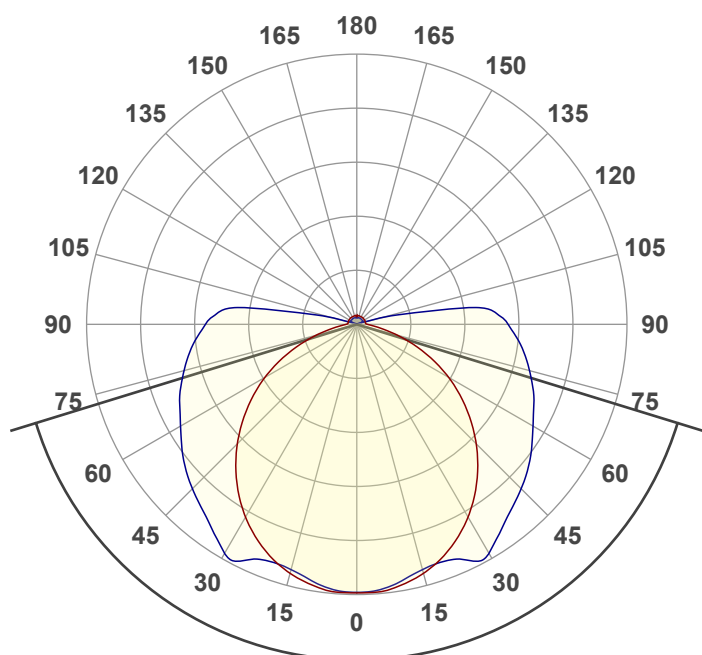
1370012

Date and time:

24/05/2022 13:55:03

Description:

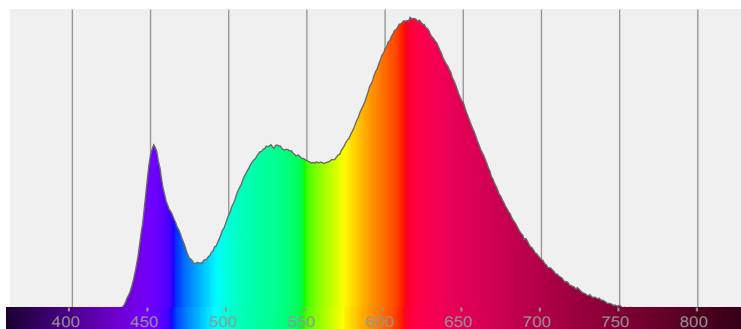
IP44 Bathroom Wall Light



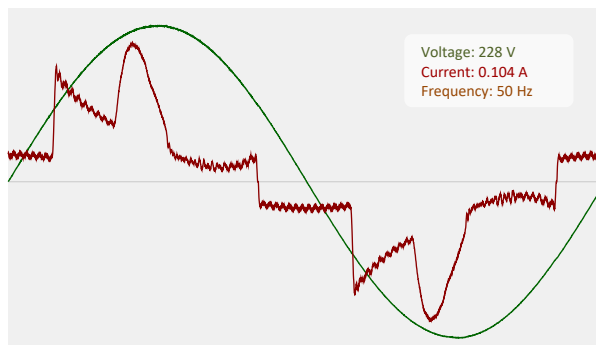
145.8°

CIE 1931  
x: 0.435  
y: 0.398

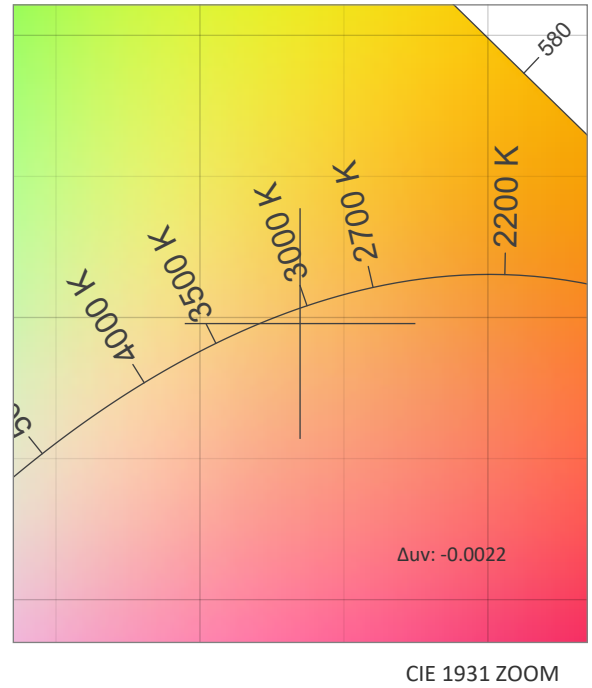
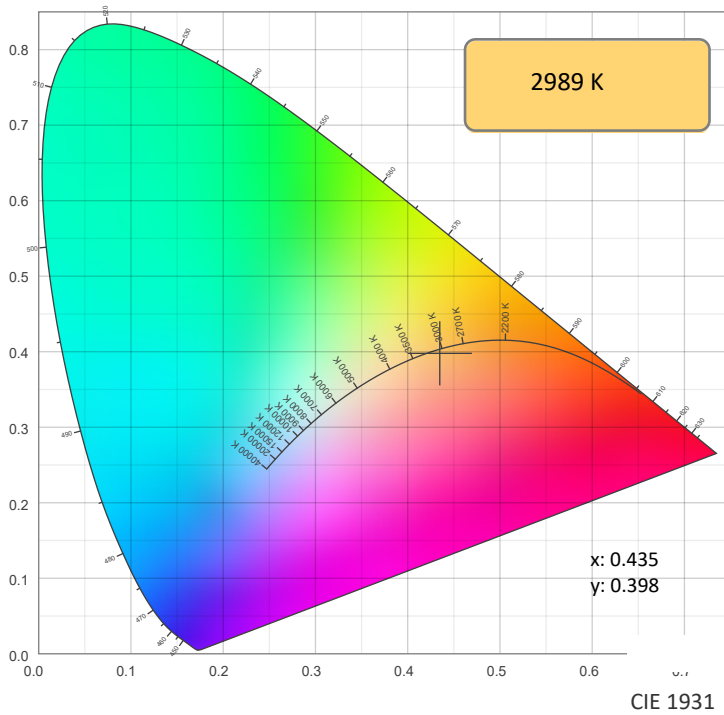
## SPECTRA



## POWER

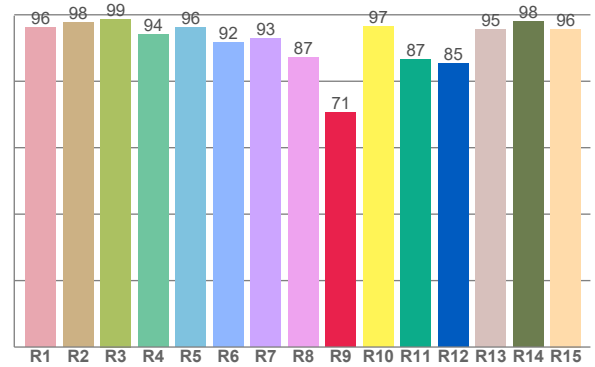
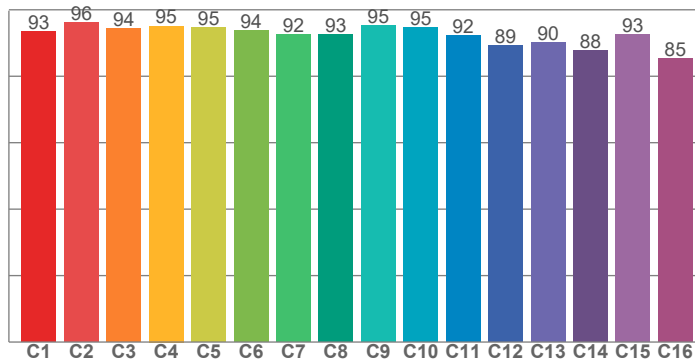


## COLOR DETAILS



TM30: 92.9

CRI: 94.4 (R1-R8)



CRI R values, only R1-R8 are used to calculate final CRI value

R1	R2	R3	R4	R5	R6	R7	R8	R9	R10	R11	R12	R13	R14	R15
96.3	97.6	98.7	94.2	96.2	91.6	93.0	87.3	70.7	96.5	86.5	85.4	95.5	98.1	95.7

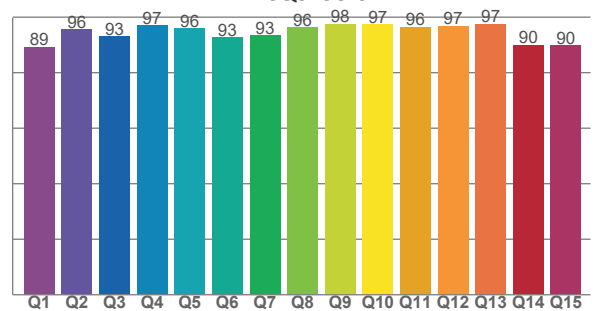
TM30 C values, 16 binned values out of total of 99 C values

C1	C2	C3	C4	C5	C6	C7	C8	C9	C10	C11	C12	C13	C14	C15	C16
93.5	96.1	94.3	95.1	94.7	93.7	92.4	92.6	95.3	94.6	92.3	89.2	90.1	87.7	92.6	85.3

CQS Q values

Q1	Q2	Q3	Q4	Q5	Q6	Q7	Q8	Q9	Q10	Q11	Q12	Q13	Q14	Q15
89.3	95.5	93.0	96.9	95.9	92.6	93.3	96.3	97.6	97.4	96.4	96.9	97.5	90.1	89.7

CQS: 93.6



## COLOR PARAMETERS

Color temperature	Color rendering index	Red component	Color fidelity	Color gamut	Color quality scale	Color coordinate cie 1931	Color coordinate cie 1931	Color coordinate	Color coordinate	Color deviation from black body
CCT	CRI	CRI R9	TM30 Rf	TM30 Rg	CQS	x	y	u	v	$\Delta uv$
2989 K	94.4	70.7	92.9	101.9	93.6	0.435	0.398	0.252	0.346	-0.0022

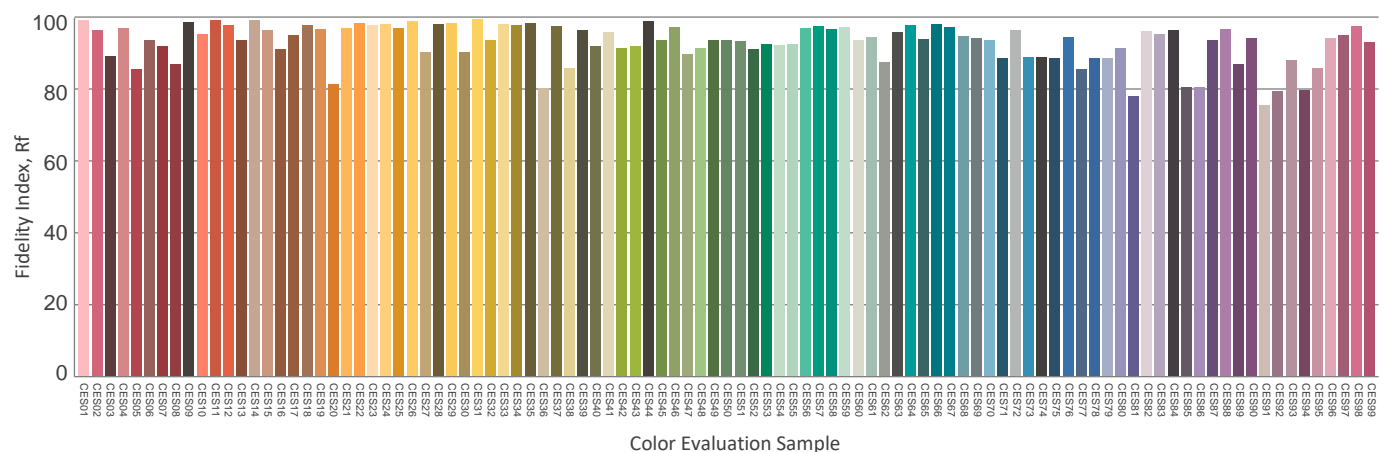
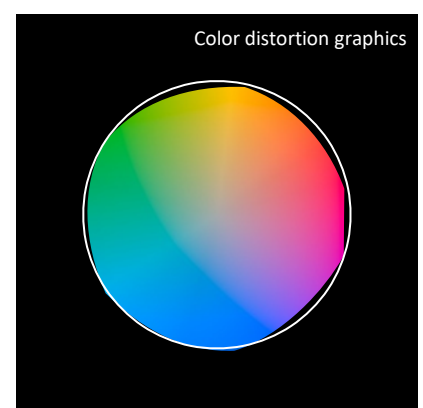
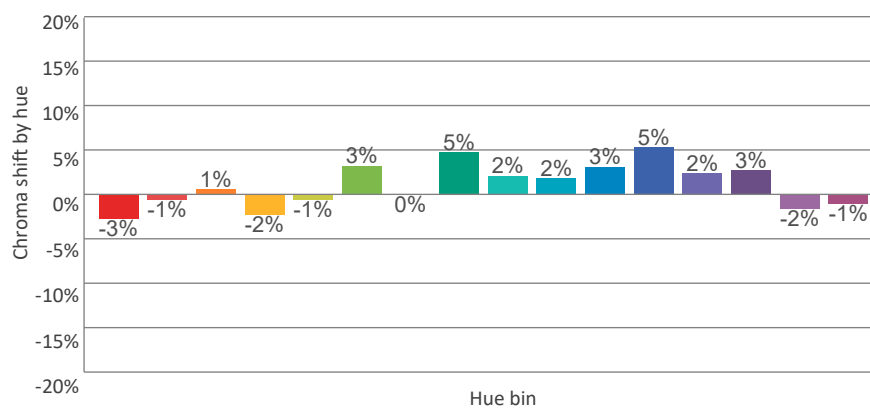
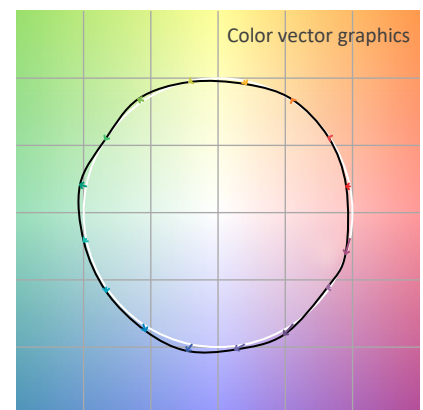
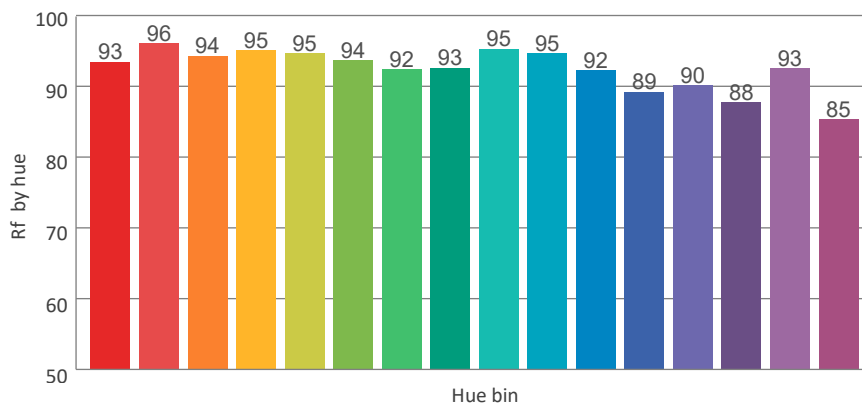
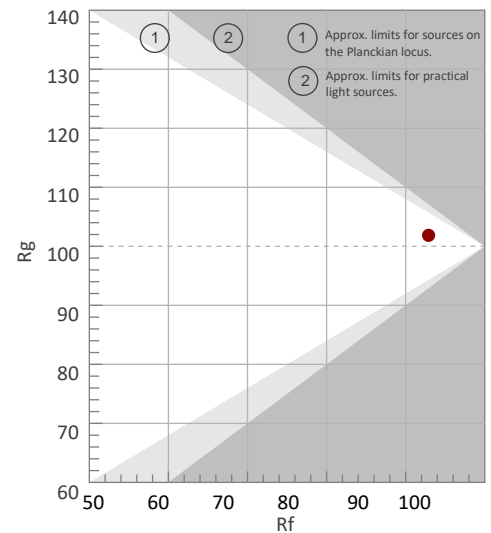
Rf 92.9

Fidelity index Rf

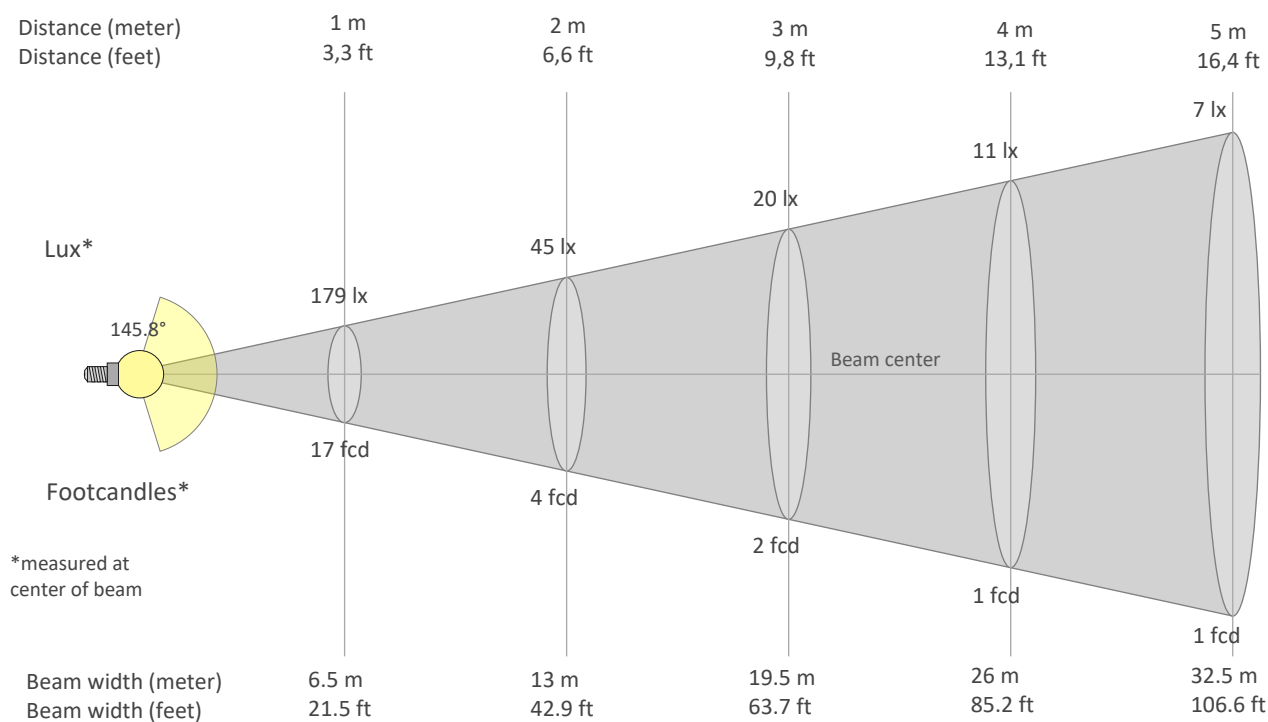
Rg 101.9

Gammut index Rg

Hue Bin	Graphic shifts (%)		
	R <sub>f</sub>	Chroma	Hue
1	93	-3%	0%
2	96	-1%	1%
3	94	1%	1%
4	95	-2%	-2%
5	95	-1%	2%
6	94	3%	2%
7	92	0%	1%
8	93	5%	0%
9	95	2%	2%
10	95	2%	3%
11	92	3%	4%
12	89	5%	-3%
13	90	2%	-7%
14	88	3%	-10%
15	93	-2%	-2%
16	85	-1%	-11%



## BEAM DETAILS



Beam intensities from 1-20m

1m	2m	3m	4m	5m	6m	7m	8m	9m	10m	11m	12m	13m	14m	15m	16m	17m	18m	19m	20m
3.3ft	6.6ft	9.8ft	13.1ft	16.4ft	19.7ft	23ft	26.2ft	29.5ft	32.8ft	36.1ft	39.4ft	42.7ft	45.9ft	49.2ft	52.5ft	55.8ft	59.1ft	62.3ft	65.6ft
179lx	45lx	20lx	11lx	7lx	5lx	4lx	3lx	2lx	2lx	1lx	1lx	1lx	1lx	1lx	1lx	1lx	1lx	0lx	0lx
16.6fcd	4.2fcd	1.8fcd	1fcd	0.7fcd	0.5fcd	0.3fcd	0.3fcd	0.2fcd	0.2fcd	0.1fcd	0.1fcd	0.1fcd	0.1fcd	0.1fcd	0.1fcd	0.1fcd	0.1fcd	0fcd	0fcd

Intensities in 0° c-plane

0°	9°	18°	27°	36°	45°	54°	63°	72°	81°	90°	99°	108°	117°	126°	135°	144°	153°	162°	171°
179	177	168	154	135	113	88	62	36	16	7	6	6	6	6	6	6	6	6	6
100%	99%	94%	86%	76%	63%	49%	35%	20%	9%	4%	3%	3%	3%	3%	3%	3%	3%	3%	3%

Intensities in 90° c-plane

0°	9°	18°	27°	36°	45°	54°	63°	72°	81°	90°	99°	108°	117°	126°	135°	144°	153°	162°	171°
179	174	168	176	166	155	144	132	123	112	100	70	5	5	5	4	5	5	5	4
100%	98%	94%	99%	93%	87%	80%	74%	69%	63%	56%	39%	3%	3%	3%	3%	3%	3%	3%	2%

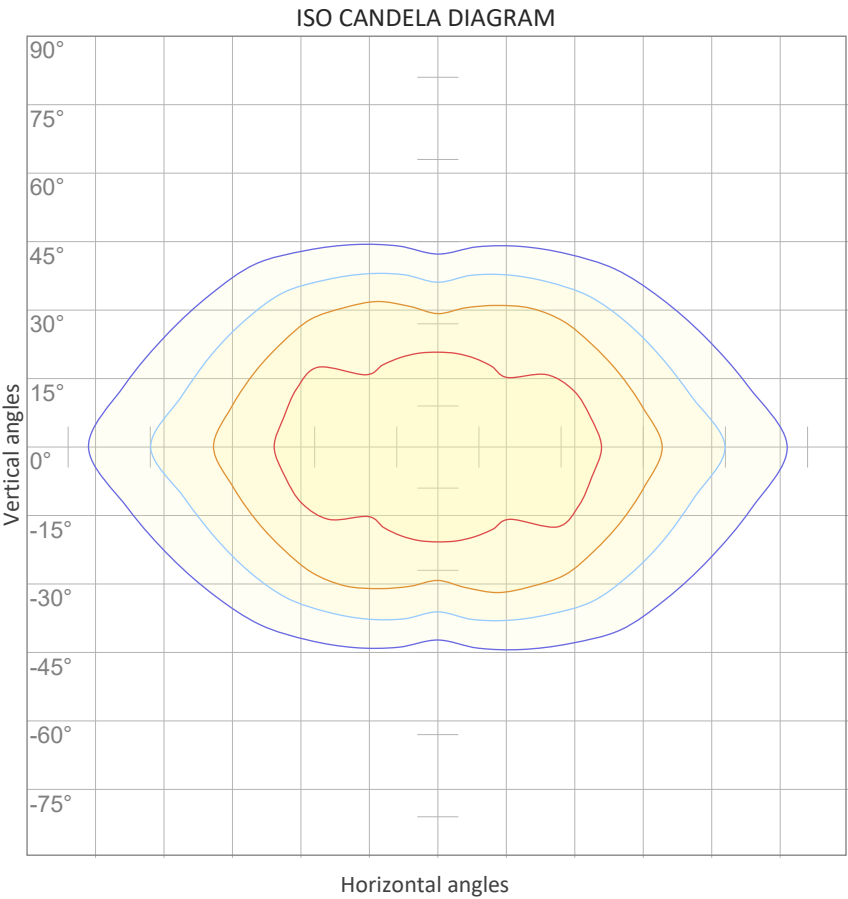
Intensities in 180° c-plane

0°	9°	18°	27°	36°	45°	54°	63°	72°	81°	90°	99°	108°	117°	126°	135°	144°	153°	162°	171°
179	177	168	154	135	113	88	62	36	16	7	6	6	6	6	6	6	6	6	6
100%	99%	94%	86%	76%	63%	49%	35%	20%	9%	4%	3%	3%	3%	3%	3%	3%	3%	3%	3%

Intensities in 270° c-plane

0°	9°	18°	27°	36°	45°	54°	63°	72°	81°	90°	99°	108°	117°	126°	135°	144°	153°	162°	171°
179	174	168	176	166	155	144	132	123	112	100	70	5	5	5	4	5	5	5	4
100%	98%	94%	99%	93%	87%	80%	74%	69%	63%	56%	39%	3%	3%	3%	3%	3%	3%	3%	2%

Beam angle 50%	Field angle 10%	Cutoff angle 2,5%	Intensity ratio in 120° cone	Intensity ratio in 90° cone
145.8°	193°	357.7°	57.4%	37.2%

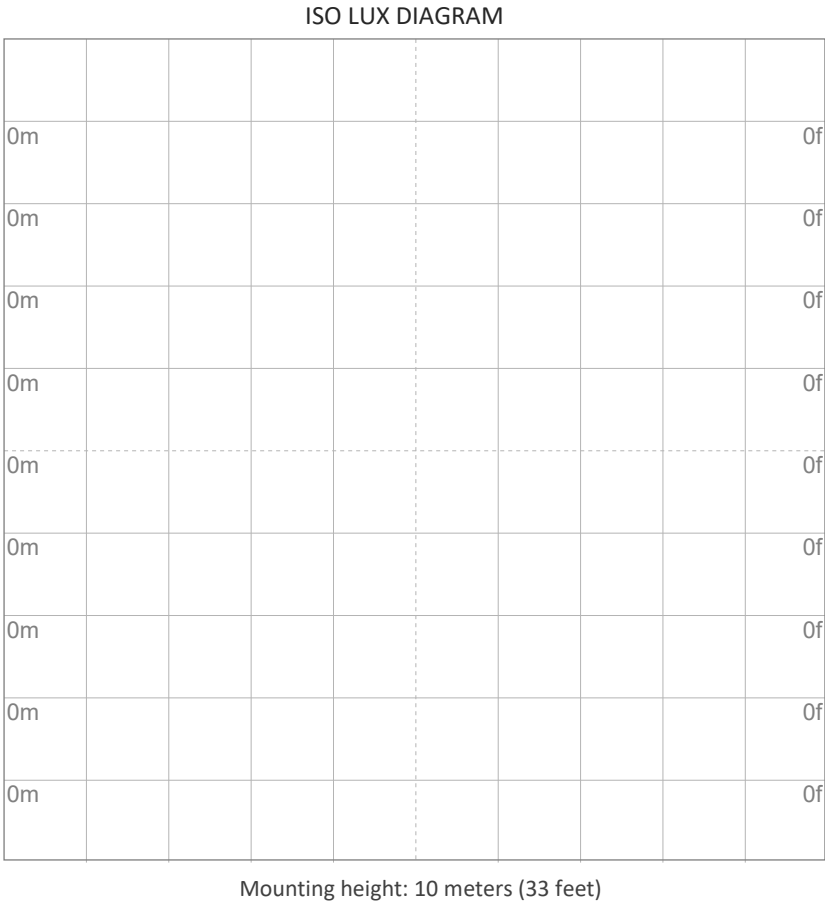


10%	18 cd
20%	36 cd
30%	54 cd
40%	71 cd
50%	89 cd
60%	107 cd
70%	125 cd
80%	143 cd
90%	161 cd

Conditions:

Number of c-planes: 8

Candela at center: 179 cd



3%	53.6m lx
5%	89.4m lx
10%	0.179 lx
30%	0.536 lx
50%	{LUX_10M50} lx

Conditions:

Number of c-planes: 8

Lux at center: 1.79 lx

Lux distribution on a surface when lamp is mounted at 10 meters from the surface.

## UGR

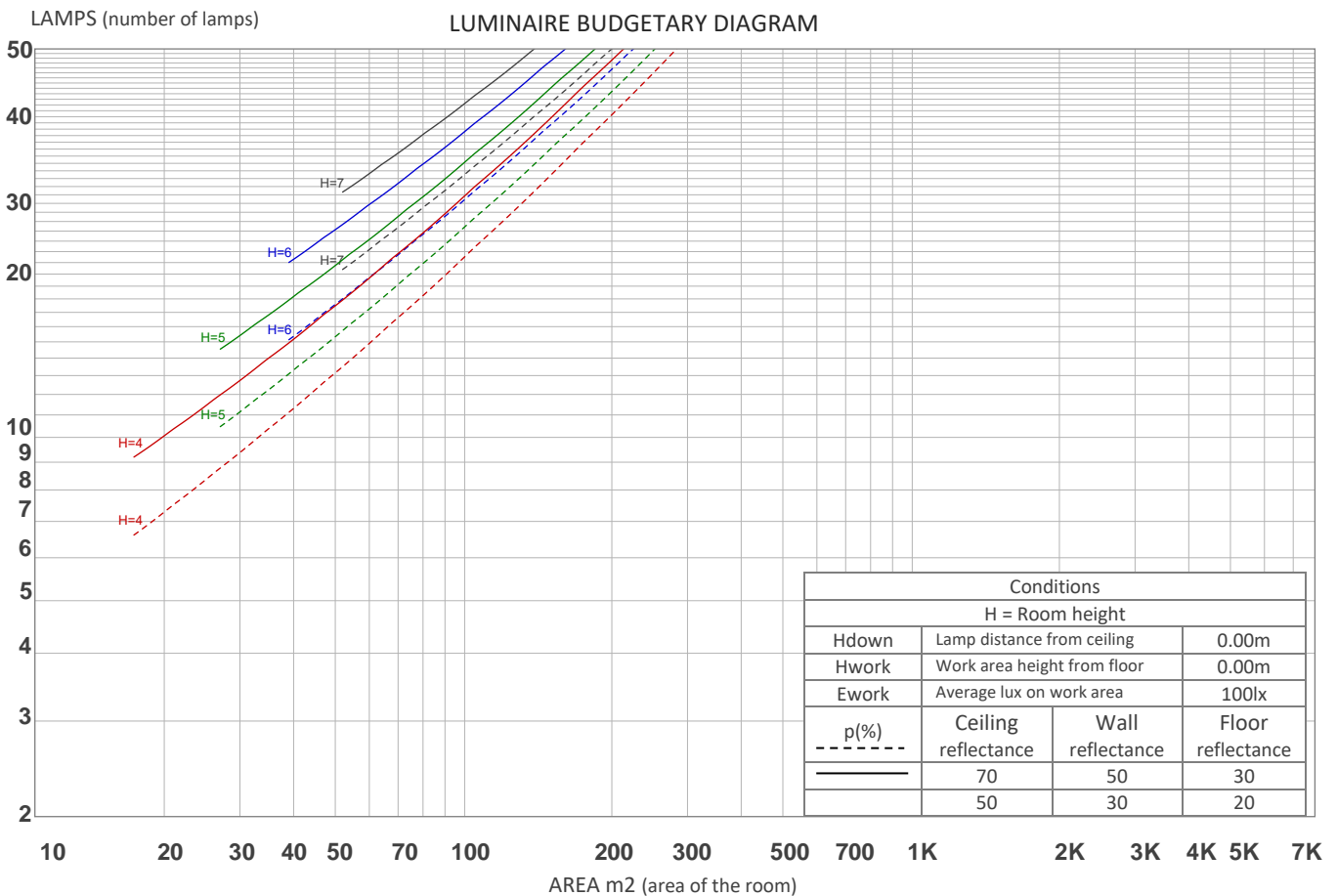
## GLARE EVALUATION ACCORDING TO UGR

p Ceiling	70	70	50	50	30	70	70	50	50	30
p Walls	50	30	50	30	30	50	30	50	30	30
p Floor	20	20	20	20	20	20	20	20	20	20
Room size X    Y	Viewing direction at right angles to lamp axis					Viewing direction parallel to lamp axis				
n/a	n/a	n/a	n/a	n/a	n/a	n/a	n/a	n/a	n/a	n/a
n/a	n/a	n/a	n/a	n/a	n/a	n/a	n/a	n/a	n/a	n/a
n/a	n/a	n/a	n/a	n/a	n/a	n/a	n/a	n/a	n/a	n/a
n/a	n/a	n/a	n/a	n/a	n/a	n/a	n/a	n/a	n/a	n/a
n/a	n/a	n/a	n/a	n/a	n/a	n/a	n/a	n/a	n/a	n/a
n/a	n/a	n/a	n/a	n/a	n/a	n/a	n/a	n/a	n/a	n/a
n/a	n/a	n/a	n/a	n/a	n/a	n/a	n/a	n/a	n/a	n/a
n/a	n/a	n/a	n/a	n/a	n/a	n/a	n/a	n/a	n/a	n/a
n/a	n/a	n/a	n/a	n/a	n/a	n/a	n/a	n/a	n/a	n/a
n/a	n/a	n/a	n/a	n/a	n/a	n/a	n/a	n/a	n/a	n/a
n/a	n/a	n/a	n/a	n/a	n/a	n/a	n/a	n/a	n/a	n/a
n/a	n/a	n/a	n/a	n/a	n/a	n/a	n/a	n/a	n/a	n/a
n/a	n/a	n/a	n/a	n/a	n/a	n/a	n/a	n/a	n/a	n/a
n/a	n/a	n/a	n/a	n/a	n/a	n/a	n/a	n/a	n/a	n/a
n/a	n/a	n/a	n/a	n/a	n/a	n/a	n/a	n/a	n/a	n/a
n/a	n/a	n/a	n/a	n/a	n/a	n/a	n/a	n/a	n/a	n/a
n/a	n/a	n/a	n/a	n/a	n/a	n/a	n/a	n/a	n/a	n/a
n/a	n/a	n/a	n/a	n/a	n/a	n/a	n/a	n/a	n/a	n/a
Variation of the observer position for the luminaire distance S										
n/a	n/a					n/a				
n/a	n/a					n/a				
n/a	n/a					n/a				
Standard table	n/a					n/a				
Correction summand	n/a					n/a				
Corrected glare indices referring to 780 lm total luminous flux										

UGR data could not be calculated due to missing/wrong symmetry. Goto Edit->Photometric->Corrections and select Correct asymmetry.

## COEFFICIENTS OF UTILIZATION

Ceiling reflectance	80				70				50			30			10			0
Wall reflectance	70	50	30	10	70	50	30	10	50	30	10	50	30	10	50	30	10	0
Floor reflectance	20	20	20	20	20	20	20	20	20	20	20	20	20	20	20	20	20	0
RCR	(RCR: Room Cavity Ratio) Room Values are expressed as percentage of Lumens delivered to the task surface																	
0	116	116	116	116	113	113	113	113	105	105	105	98	98	98	92	92	92	89
1	103	96	91	86	99	93	88	83	87	82	79	81	77	74	75	73	70	67
2	92	82	74	67	88	79	72	65	74	68	62	69	64	59	64	60	56	53
3	83	71	62	54	80	69	60	53	64	57	51	60	54	48	56	51	46	43
4	76	62	53	45	72	60	51	44	56	48	42	53	46	41	49	44	39	36
5	69	55	45	38	66	53	44	38	50	42	36	47	40	35	44	38	33	31
6	64	49	40	33	61	48	39	32	45	37	31	42	35	30	40	34	29	27
7	59	45	35	29	56	43	35	28	41	33	27	38	31	26	36	30	25	23
8	55	41	32	25	53	39	31	25	37	30	24	35	28	23	33	27	23	21
9	51	37	28	23	49	36	28	22	34	27	22	32	26	21	30	25	20	18
10	48	34	26	20	46	33	25	20	31	24	20	30	23	19	28	22	18	16



## ZONAL LUMEN SUMMARY

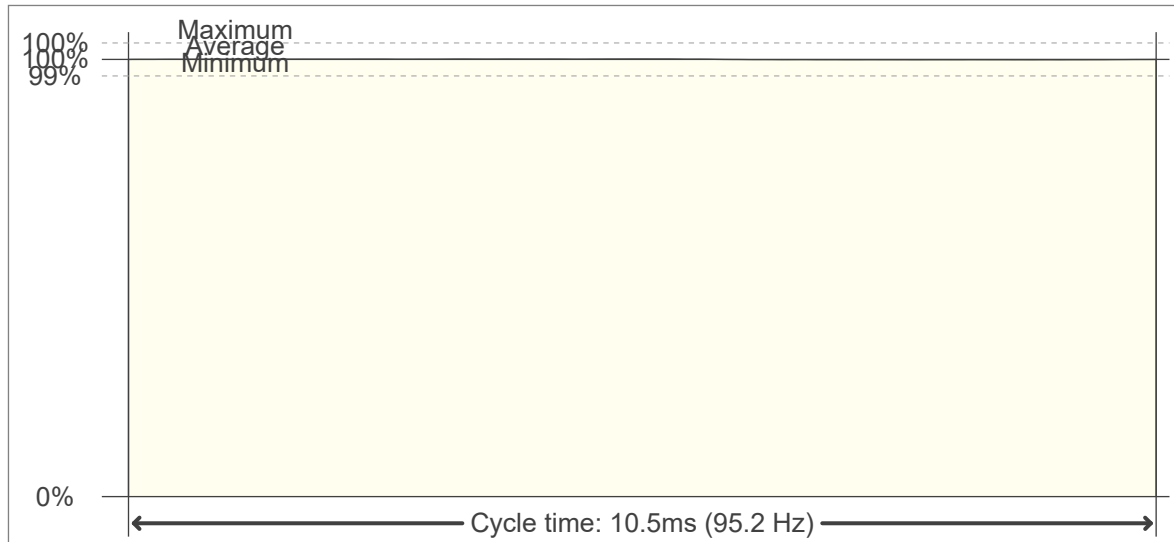
0°-10°	10°-20°	20°-30°	30°-40°	40°-50°	50°-60°	60°-70°	70°-80°	80°-90°
16.9 lm	48.1 lm	75.4 lm	96.9 lm	106 lm	105 lm	96.6 lm	83.0 lm	68.7 lm
90°-100°	100°-110°	110°-120°	120°-130°	130°-140°	140°-150°	150°-160°	160°-170°	170°-180°
51.0 lm	11.4 lm	5.24 lm	4.67 lm	4.02 lm	3.26 lm	2.40 lm	1.46 lm	0.483 lm

## FLICKER

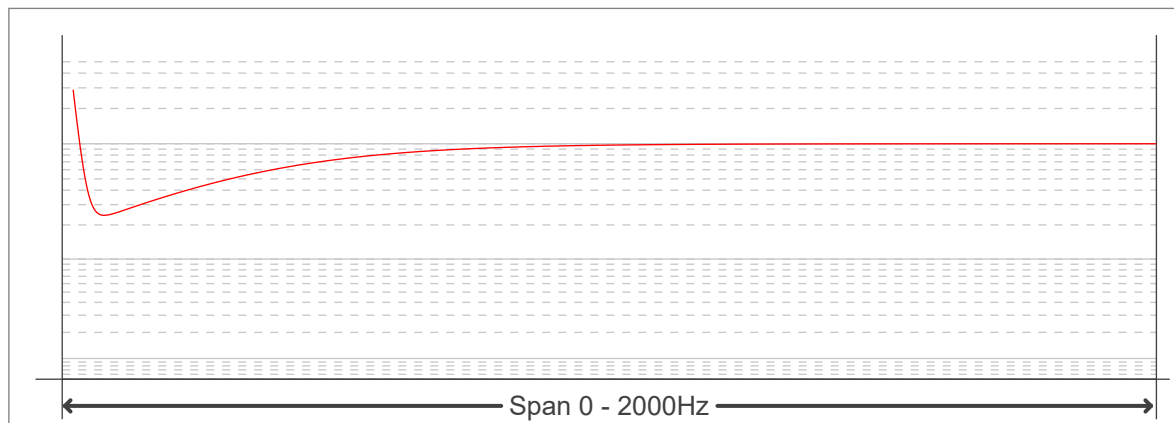
## FLICKER CURVE (COMPLETE SAMPLED FLICKER)



## FLICKER FRAME (FRAME OF ONE FLICKER PERIOD)



## FLICKER FFT (FREQUENCY SCOPE OF FLICKER CURVE)



## FLICKER RESULTS:

Flicker frequency:	95.24 Hz
Flicker index:	0
Flicker percentage:	0.16 %
SVM: (Visual flicker)	0

## FLICKER CONDITIONS:

Sample rate:	20000 samples/second
--------------	----------------------