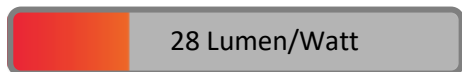


PHOTOMETRIC TEST REPORT

MYOS TEXTURED BLACK

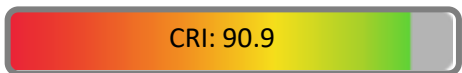
astro

LIGHT EFFICIENCY:



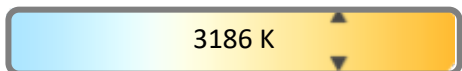
OUTPUT: 316 lm

LIGHT QUALITY:



PEAK: 1253 cd

COLOR TEMPERATURE:



POWER: 11.4 W

PF: 0.94

Tracking number: [n/a](#)

Product name:

Myos Textured Black

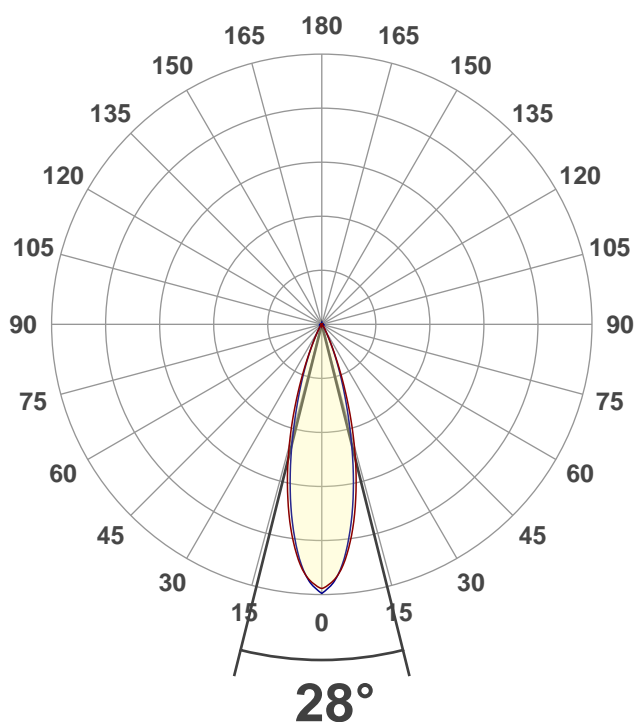
Item number:

1426002

Date and time:

24/06/2020 13:35:06

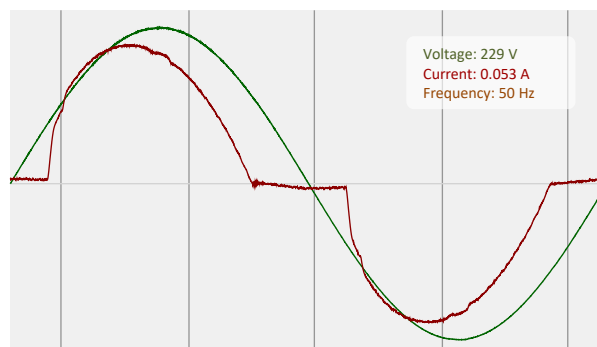
Description:

IP65 Outdoor Ground Spike SpotlightCIE 1931
x: 0.423
y: 0.395

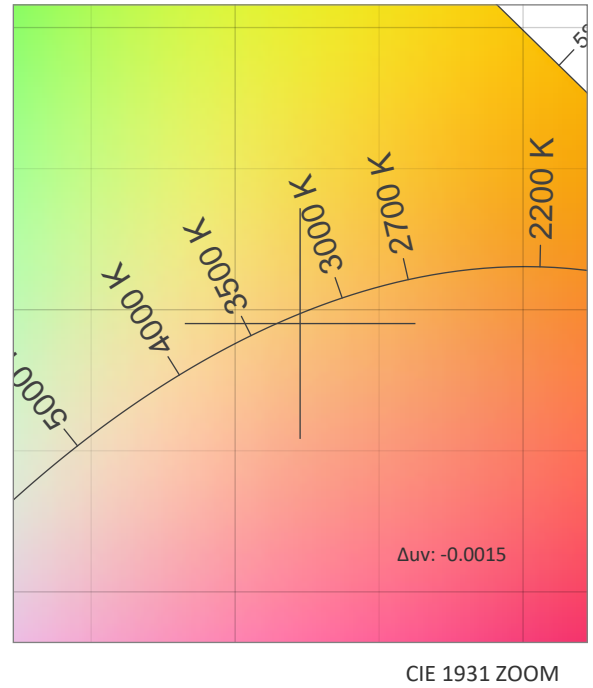
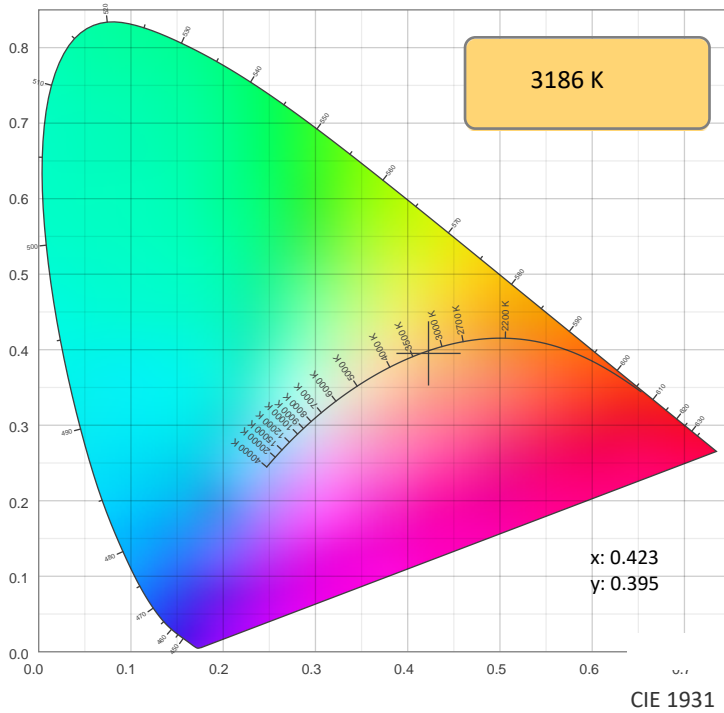
SPECTRA



POWER

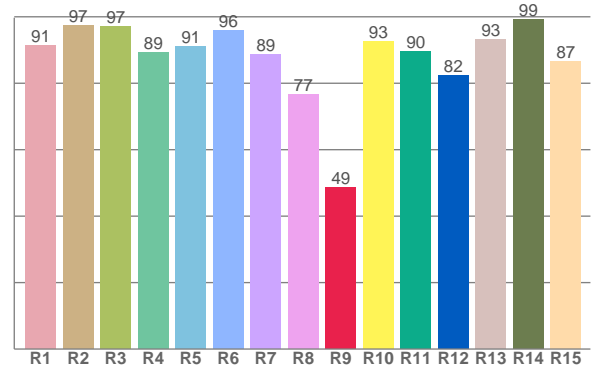
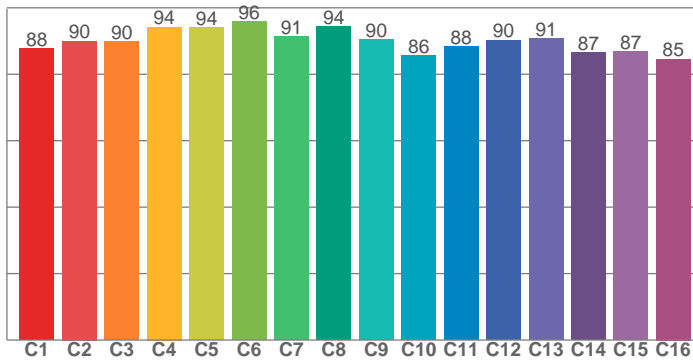


COLOR DETAILS



TM30: 90.2

CRI: 90.9 (R1-R8)



CRI R values, only R1-R8 are used to calculate final CRI value

R1	R2	R3	R4	R5	R6	R7	R8	R9	R10	R11	R12	R13	R14	R15
91.3	97.3	97.0	89.3	91.2	95.8	88.7	76.6	48.7	92.5	89.5	82.4	93.2	99.3	86.6

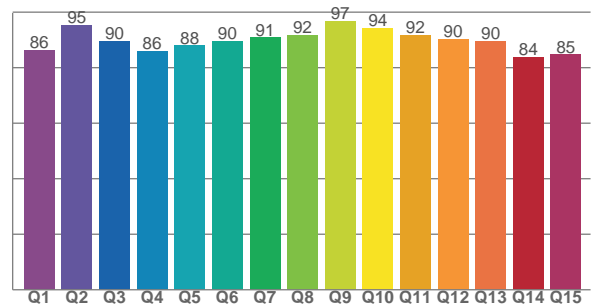
TM30 C values, 16 binned values out of total of 99 C values

C1	C2	C3	C4	C5	C6	C7	C8	C9	C10	C11	C12	C13	C14	C15	C16
87.7	90.0	89.9	94.2	94.0	96.0	91.3	94.3	90.4	85.5	88.3	90.3	90.7	86.6	86.9	84.6

CQS Q values

Q1	Q2	Q3	Q4	Q5	Q6	Q7	Q8	Q9	Q10	Q11	Q12	Q13	Q14	Q15
86.4	95.4	89.5	86.0	88.0	89.5	90.8	91.7	96.9	94.4	91.8	90.2	89.7	83.8	84.7

CQS: 89.2



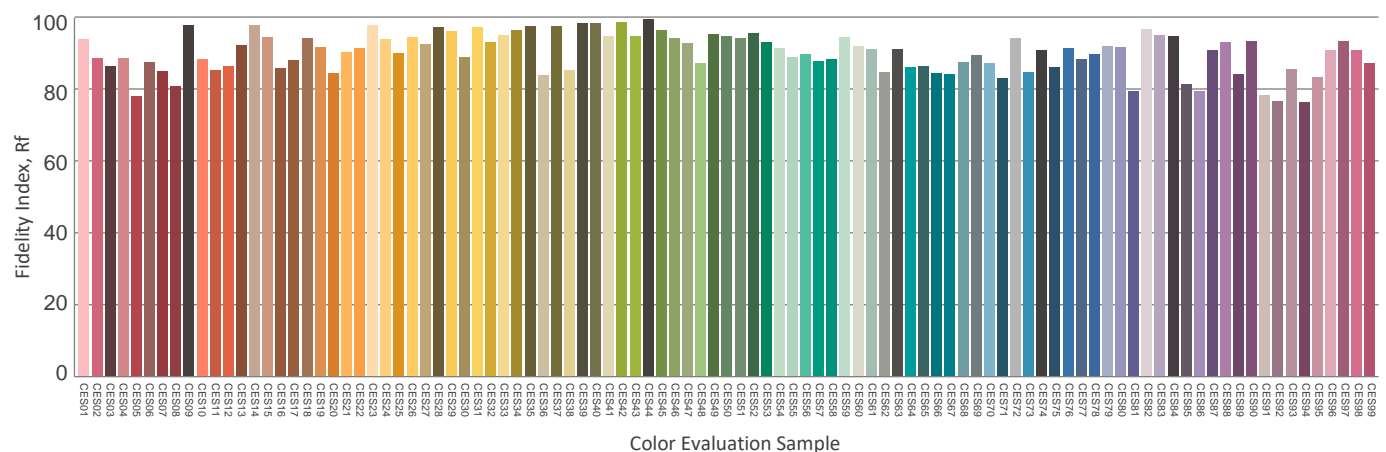
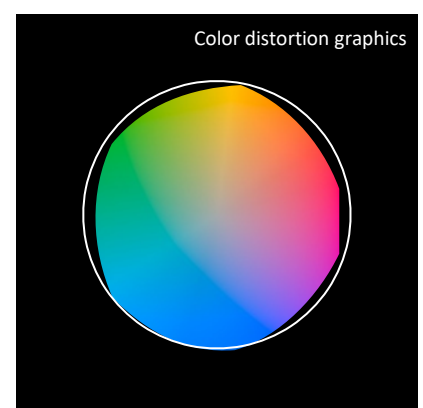
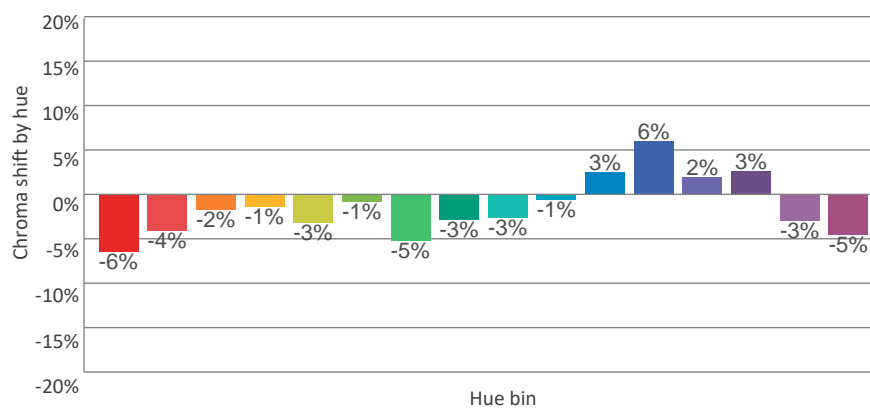
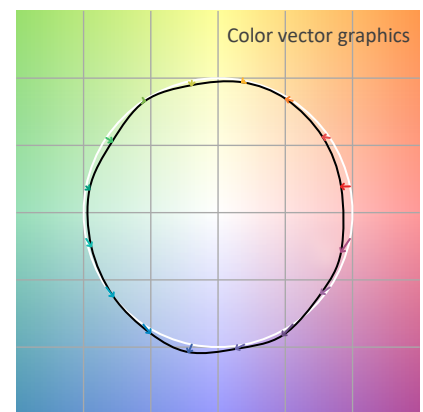
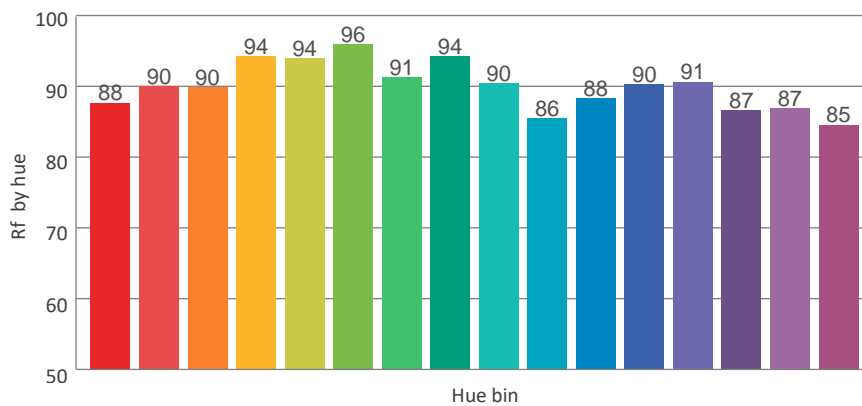
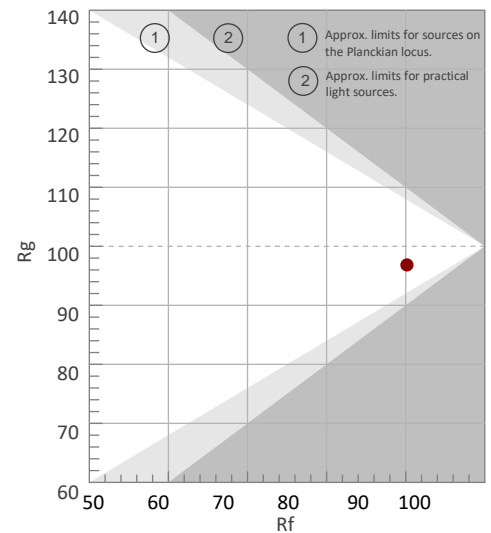
COLOR PARAMETERS

Color temperature	Color rendering index	Red component	Color fidelity	Color gamut	Color quality scale	Color coordinate cie 1931	Color coordinate cie 1931	Color coordinate	Color coordinate	Color deviation from black body
CCT	CRI	CRI R9	TM30 Rf	TM30 Rg	CQS	x	y	u	v	Δuv
3186 K	90.9	48.7	90.2	96.8	89.2	0.423	0.395	0.245	0.344	-0.0015

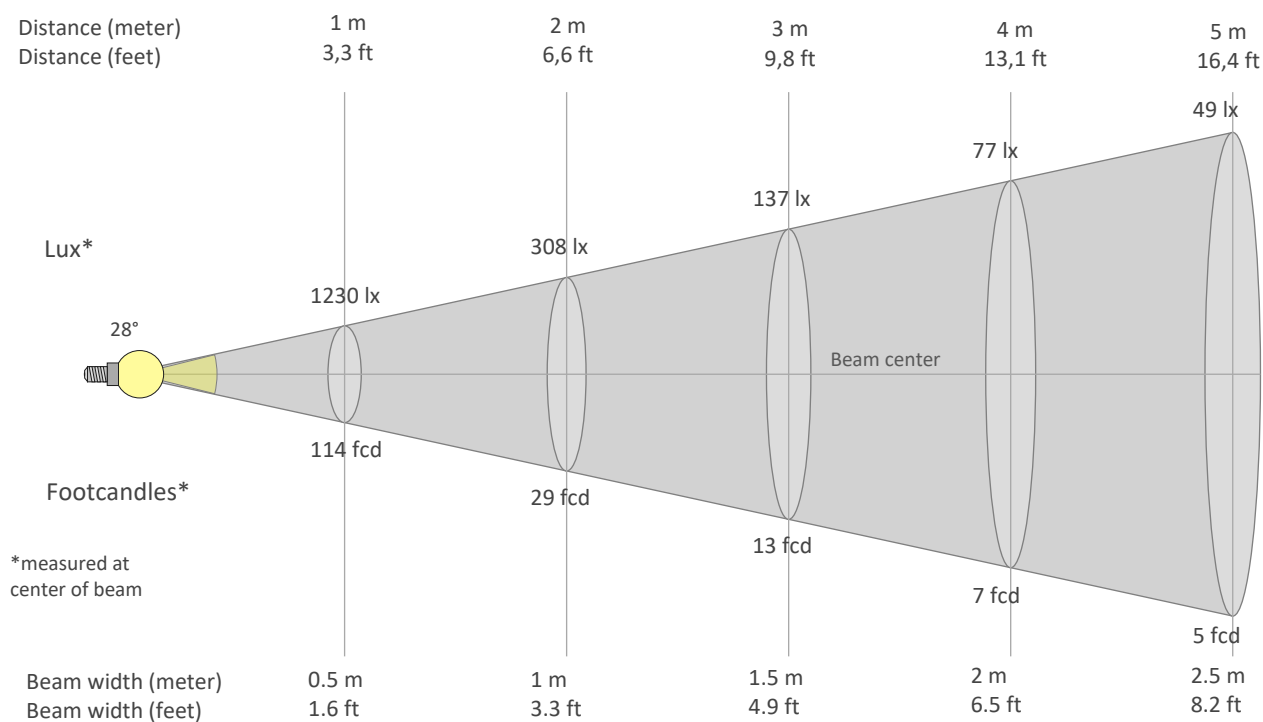
Rf 90.2
Fidelity index Rf

Rg 96.8
Gammut index Rg

Hue Bin	Graphic shifts (%)		
	R _f	Chroma	Hue
1	88	-6%	1%
2	90	-4%	4%
3	90	-2%	5%
4	94	-1%	1%
5	94	-3%	1%
6	96	-1%	-1%
7	91	-5%	0%
8	94	-3%	2%
9	90	-3%	6%
10	86	-1%	8%
11	88	3%	8%
12	90	6%	-1%
13	91	2%	-7%
14	87	3%	-11%
15	87	-3%	-7%
16	85	-5%	-11%



BEAM DETAILS



Beam intensities from 1-20m

1m	2m	3m	4m	5m	6m	7m	8m	9m	10m	11m	12m	13m	14m	15m	16m	17m	18m	19m	20m
3.3ft	6.6ft	9.8ft	13.1ft	16.4ft	19.7ft	23ft	26.2ft	29.5ft	32.8ft	36.1ft	39.4ft	42.7ft	45.9ft	49.2ft	52.5ft	55.8ft	59.1ft	62.3ft	65.6ft
1230lx	308lx	137lx	77lx	49lx	34lx	25lx	19lx	15lx	12lx	10lx	9lx	7lx	6lx	5lx	5lx	4lx	4lx	3lx	3lx
114.3fcd	28.6fcd	12.7fcd	7.1fcd	4.6fcd	3.2fcd	2.3fcd	1.8fcd	1.4fcd	1.1fcd	0.9fcd	0.8fcd	0.7fcd	0.6fcd	0.5fcd	0.4fcd	0.4fcd	0.4fcd	0.3fcd	0.3fcd

Intensities in 0° c-plane

0°	2°	4°	6°	8°	10°	12°	14°	16°	18°	20°	22°	24°	26°	28°	30°	32°	34°	36°	38°
1230	1206	1162	1089	995	887	770	649	526	406	297	205	133	86	56	39	28	21	16	12
100%	98%	94%	88%	81%	72%	63%	53%	43%	33%	24%	17%	11%	7%	5%	3%	2%	2%	1%	1%

Intensities in 90° c-plane

0°	2°	4°	6°	8°	10°	12°	14°	16°	18°	20°	22°	24°	26°	28°	30°	32°	34°	36°	38°
1230	1218	1159	1070	959	837	707	575	451	344	256	183	125	81	52	34	23	17	13	9
100%	99%	94%	87%	78%	68%	57%	47%	37%	28%	21%	15%	10%	7%	4%	3%	2%	1%	1%	1%

Intensities in 180° c-plane

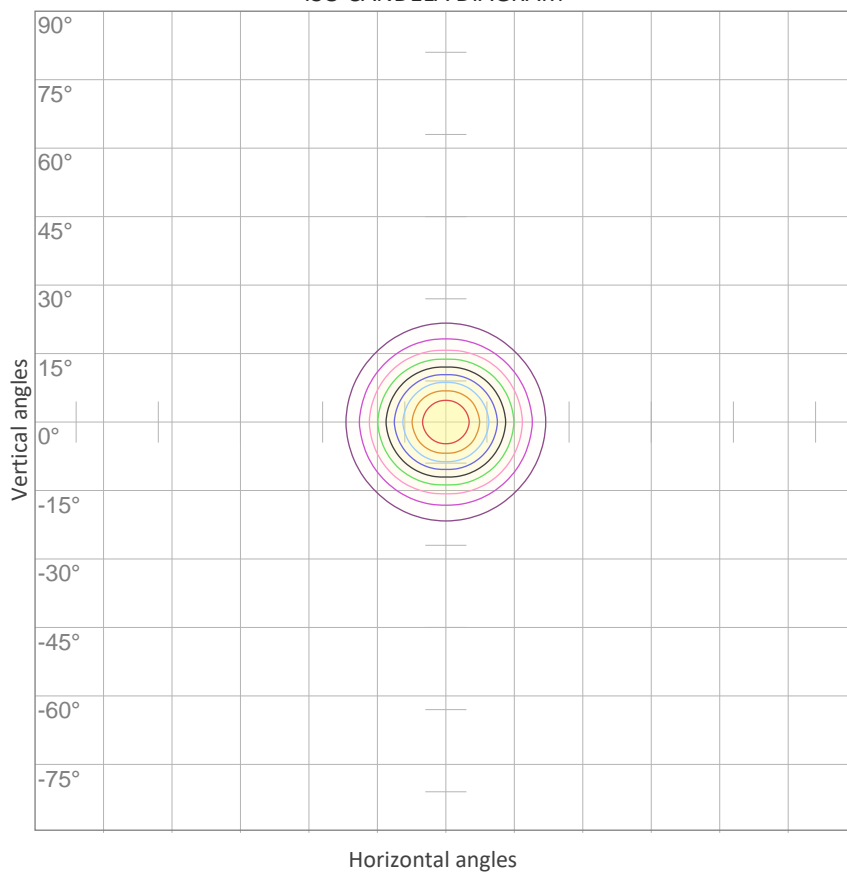
0°	2°	4°	6°	8°	10°	12°	14°	16°	18°	20°	22°	24°	26°	28°	30°	32°	34°	36°	38°
1230	1206	1162	1089	995	887	770	649	526	406	297	205	133	86	56	39	28	21	16	12
100%	98%	94%	88%	81%	72%	63%	53%	43%	33%	24%	17%	11%	7%	5%	3%	2%	2%	1%	1%

Intensities in 270° c-plane

0°	2°	4°	6°	8°	10°	12°	14°	16°	18°	20°	22°	24°	26°	28°	30°	32°	34°	36°	38°
1230	1218	1159	1070	959	837	707	575	451	344	256	183	125	81	52	34	23	17	13	9
100%	99%	94%	87%	78%	68%	57%	47%	37%	28%	21%	15%	10%	7%	4%	3%	2%	1%	1%	1%

Beam angle 50%	Field angle 10%	Cutoff angle 2,5%	Intensity ratio in 120° cone	Intensity ratio in 90° cone
28°	48.2°	61.7°	99.4%	98.8%

ISO CANDELA DIAGRAM



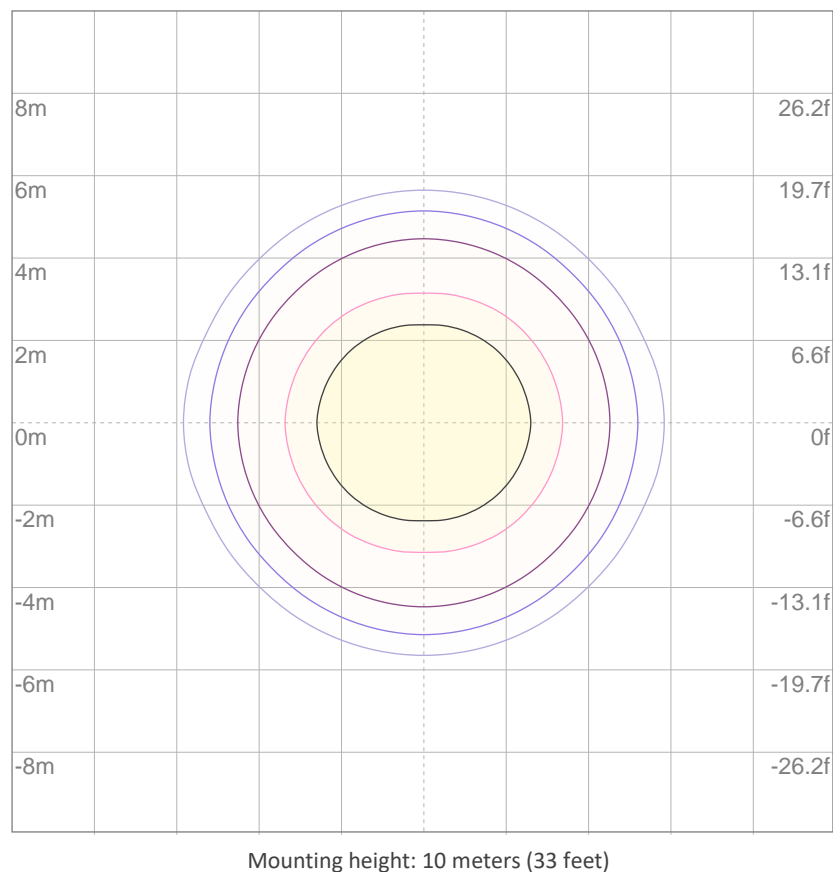
10%	123 cd
20%	246 cd
30%	369 cd
40%	492 cd
50%	615 cd
60%	738 cd
70%	861 cd
80%	984 cd
90%	1107 cd

Conditions:

Number of c-planes: 8

Candela at center: 1230 cd

ISO LUX DIAGRAM



3%	0.369 lx
5%	0.615 lx
10%	1.23 lx
30%	3.69 lx
50%	{LUX_10M50} lx

Conditions:

Number of c-planes: 8

Lux at center: 12.3 lx

Lux distribution on a surface when lamp is mounted at 10 meters from the surface.

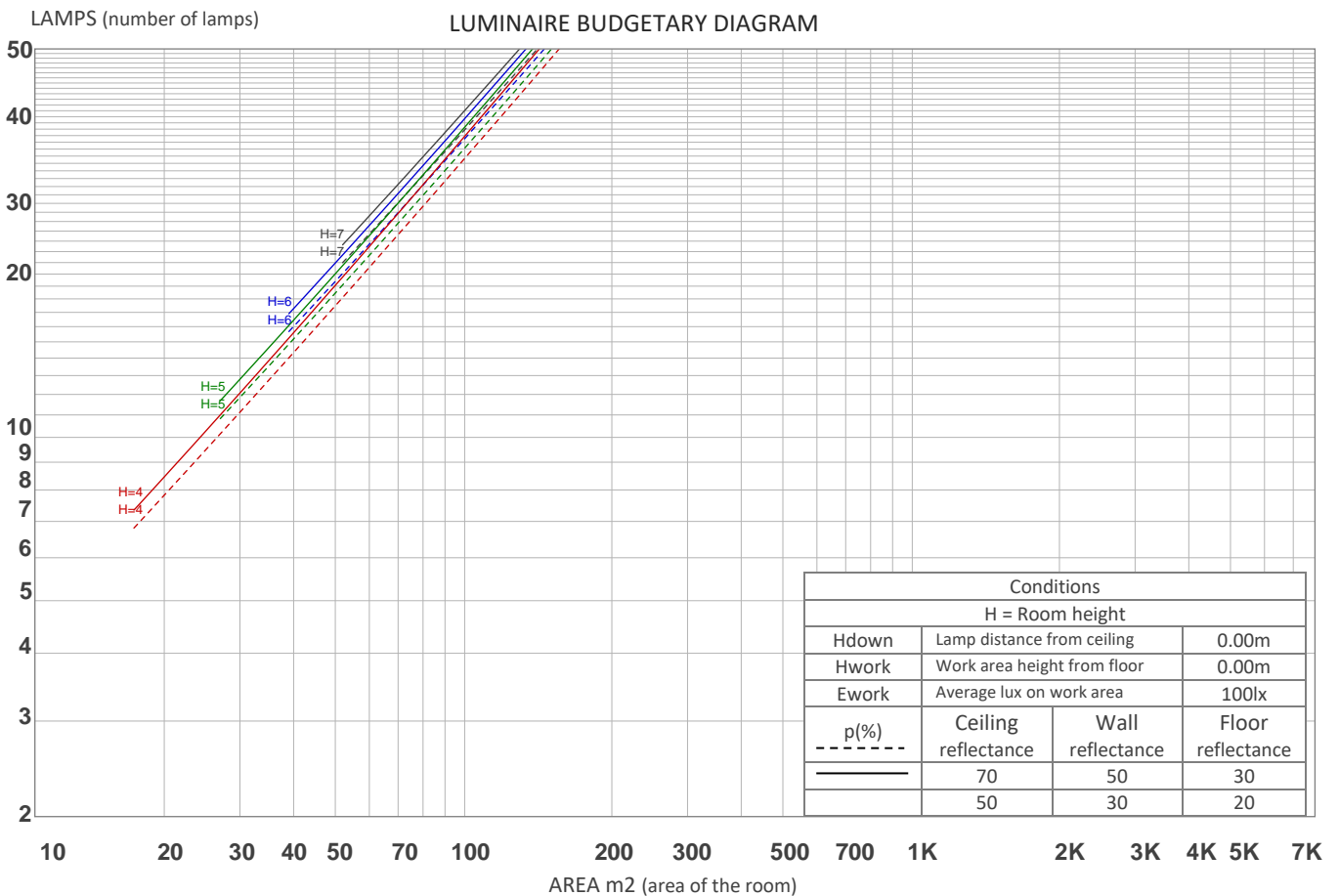
UGR

GLARE EVALUATION ACCORDING TO UGR

p Ceiling		70	70	50	50	30	70	70	50	50	30
p Walls		50	30	50	30	30	50	30	50	30	30
p Floor		20	20	20	20	20	20	20	20	20	20
Room size X Y		Viewing direction at right angles to lamp axis					Viewing direction parallel to lamp axis				
2H	2H	5.8	6.2	5.8	6.4	6.6	4.8	5.2	4.9	5.4	5.6
	3H	5.4	6.0	5.8	6.2	6.4	4.5	5.1	4.9	5.3	5.5
	4H	5.4	5.9	5.8	6.2	6.4	4.4	5.0	4.8	5.2	5.5
	6H	5.4	5.8	5.7	6.1	6.5	4.4	4.9	4.7	5.2	5.5
	8H	5.3	5.8	5.6	6.1	6.5	4.4	4.8	4.7	5.1	5.5
	12H	5.3	5.7	5.6	6.0	6.5	4.3	4.7	4.7	5.1	5.5
4H	2H	5.4	5.9	5.8	6.2	6.4	4.4	5.0	4.8	5.2	5.5
	3H	5.3	5.7	5.6	6.1	6.5	4.3	4.8	4.7	5.1	5.5
	4H	5.1	5.5	5.5	6.0	6.5	4.2	4.6	4.6	5.0	5.5
	6H	5.0	5.5	5.5	5.8	6.2	4.1	4.6	4.6	4.9	5.2
	8H	5.0	5.4	5.5	5.7	6.1	4.0	4.5	4.6	4.8	5.2
	12H	4.9	5.2	5.4	5.6	6.1	4.0	4.3	4.5	4.7	5.2
8H	4H	5.0	5.4	5.5	5.7	6.1	4.0	4.5	4.6	4.8	5.2
	6H	4.9	5.2	5.4	5.6	6.2	4.0	4.2	4.5	4.7	5.2
	8H	4.9	5.1	5.4	5.6	6.3	4.0	4.2	4.5	4.7	5.3
	12H	4.8	5.0	5.4	5.5	6.1	3.9	4.1	4.5	4.6	5.2
12H	4H	4.9	5.2	5.4	5.6	6.1	4.0	4.3	4.5	4.7	5.2
	6H	4.9	5.1	5.4	5.6	6.3	4.0	4.2	4.5	4.7	5.3
	8H	4.8	5.0	5.4	5.5	6.1	3.9	4.1	4.5	4.6	5.2
Variation of the observer position for the luminaire distance S											
S = 1.0H		5.7 / -11.3					5.6 / -11.0				
S = 1.5H		8.4 / -15.9					8.3 / -15.2				
S = 2.0H		10.4 / -16.8					10.3 / -15.7				
Standard table		n/a					n/a				
Correction summand		n/a					n/a				
Corrected glare indices referring to 316 lm total luminous flux											

COEFFICIENTS OF UTILIZATION

Ceiling reflectance	80				70				50			30			10			0
Wall reflectance	70	50	30	10	70	50	30	10	50	30	10	50	30	10	50	30	10	0
Floor reflectance	20	20	20	20	20	20	20	20	20	20	20	20	20	20	20	20	20	0
RCR	(RCR: Room Cavity Ratio) Room Values are expressed as percentage of Lumens delivered to the task surface																	
0	119	119	119	119	116	116	116	116	111	111	111	106	106	106	102	102	102	99
1	115	113	111	109	112	110	109	107	106	105	104	103	102	101	99	98	98	96
2	111	107	104	102	109	106	103	100	102	100	98	99	98	96	97	95	94	93
3	107	102	99	96	105	101	98	95	99	96	94	96	94	92	94	92	91	89
4	104	98	94	91	102	97	94	91	95	92	90	93	91	89	92	89	88	86
5	101	95	90	87	99	94	90	87	92	89	86	90	88	85	89	87	85	83
6	98	91	87	84	96	90	86	84	89	86	83	88	85	82	87	84	82	81
7	95	88	84	81	94	87	83	81	86	83	80	85	82	80	84	81	79	78
8	92	85	81	78	91	85	81	78	84	80	78	83	80	77	82	79	77	76
9	89	83	78	76	88	82	78	75	81	78	75	80	77	75	80	77	75	74
10	87	80	76	73	86	80	76	73	79	75	73	78	75	73	78	75	73	72

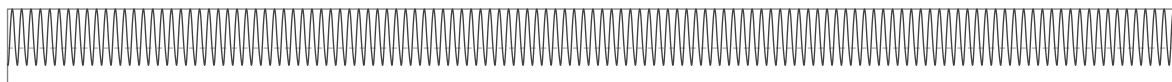


ZONAL LUMEN SUMMARY

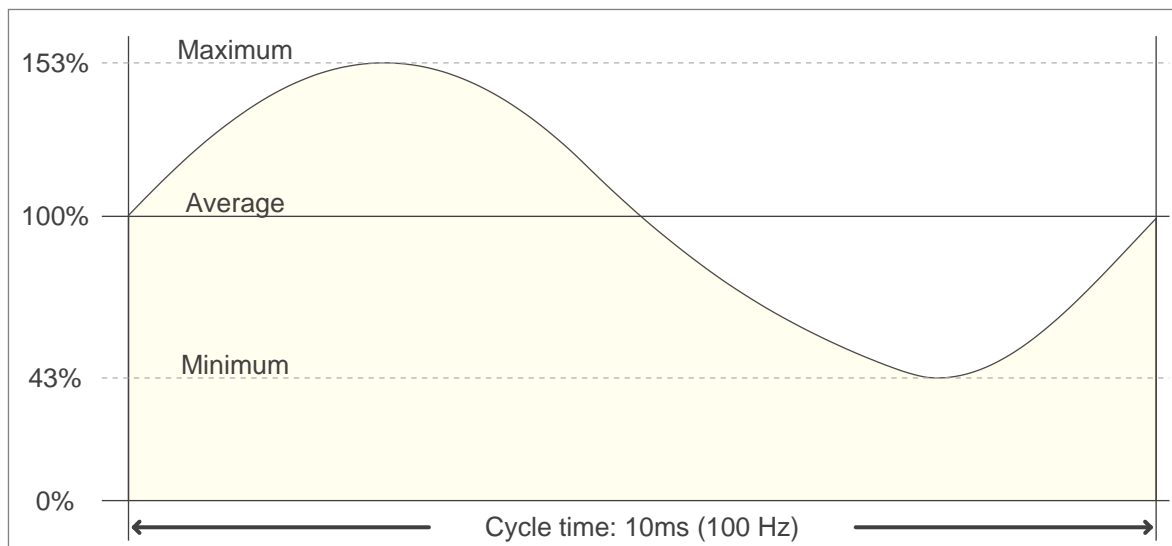
0°-10°	10°-20°	20°-30°	30°-40°	40°-50°	50°-60°	60°-70°	70°-80°	80°-90°
98.6 lm	149 lm	51.8 lm	11.1 lm	2.61 lm	0.835 lm	0.173 lm	0.104 lm	0.081 lm
90°-100°	100°-110°	110°-120°	120°-130°	130°-140°	140°-150°	150°-160°	160°-170°	170°-180°
0.079 lm	0.087 lm	0.118 lm	0.152 lm	0.213 lm	0.322 lm	0.336 lm	0.229 lm	0.066 lm

FLICKER

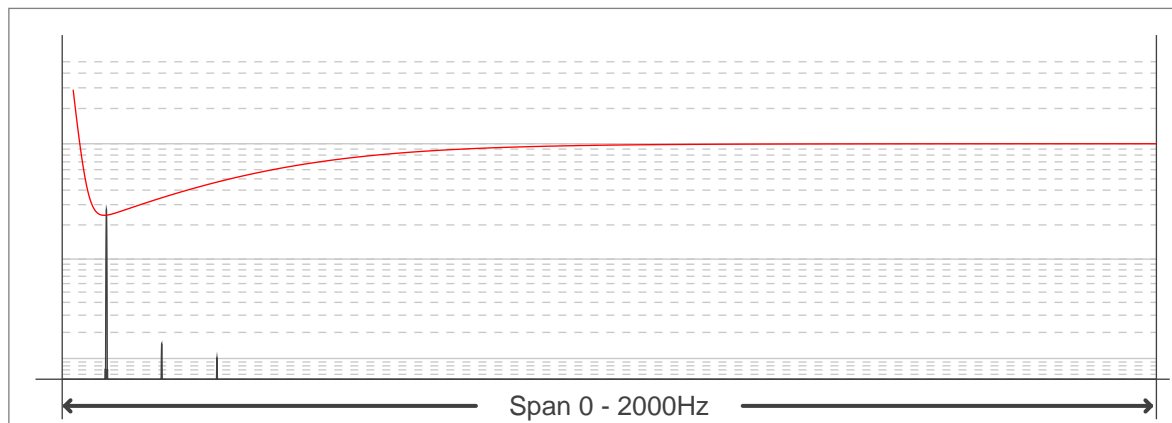
FLICKER CURVE (COMPLETE SAMPLED FLICKER)



FLICKER FRAME (FRAME OF ONE FLICKER PERIOD)



FLICKER FFT (FREQUENCY SCOPE OF FLICKER CURVE)



FLICKER RESULTS:

Flicker frequency:	100 Hz
Flicker index:	0.17
Flicker percentage:	56.24 %
SVM: (Visual flicker)	2.13

FLICKER CONDITIONS:

Sample rate:	40000 samples/second
--------------	----------------------