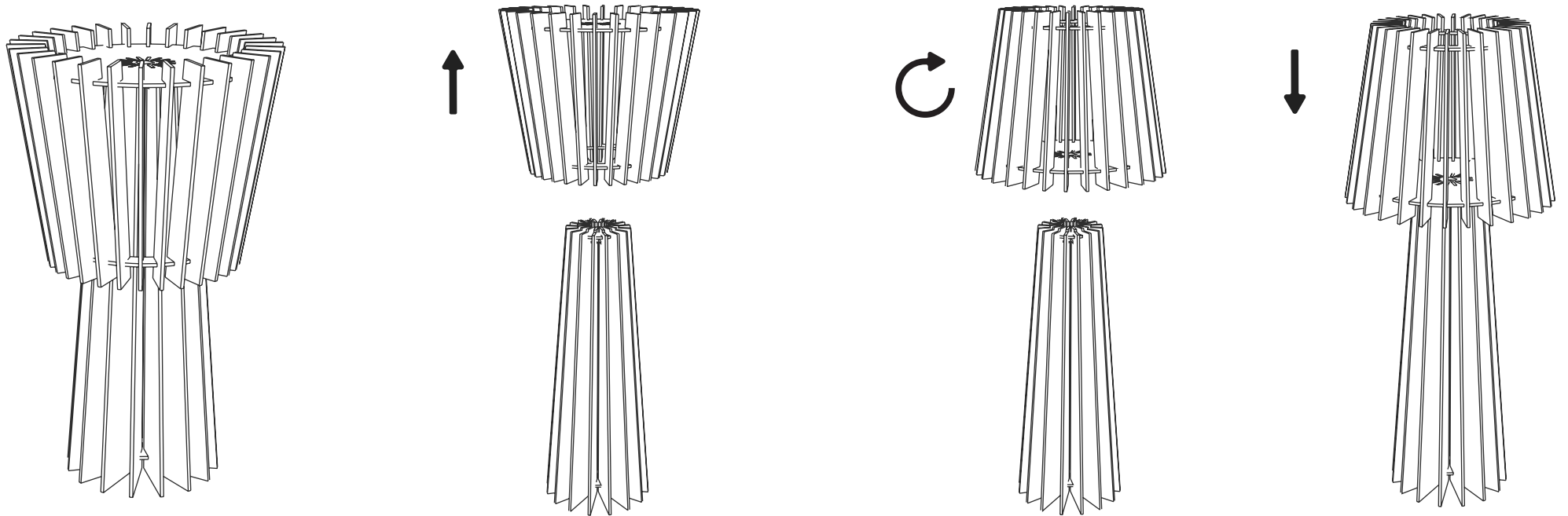


Thank you for your purchase!

Please read this manual carefully to ensure a safe and correct install of your light.

- The manufacturer is not responsible for damage caused by incorrect installation.
- Always turn the power off before installation, carry out maintenance or repairs.
- If in doubt, contact a qualified electrician.
- Keep light away from liquid or flammable objects.
- When installing, make sure cables are not crushed, damaged or corroded.
- If a cable is damaged, it must be replaced by a trained professional.





Assembled inside box
Material: PET Felt
Weight: 2KG
IP20

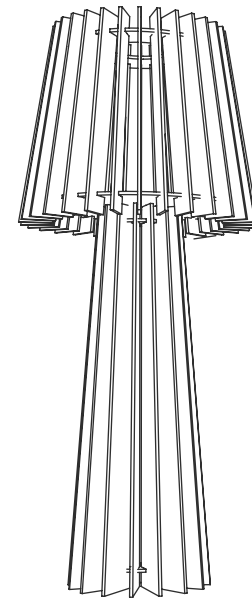
E27 220-240V Max. 10W
Excluding lightsource
Recommended light source: LED Globe 195 clear

luménear

Zoeterwoudseweg 21D • 2321 GM Leiden • The Netherlands
(0)715352210 • info@lumenear.com • www.lumenear.com

luménear

Acoustic Lighting



Pyknic

Installation Guide