

Thank you for purchasing this original Jacco Maris fixture. Designed and produced with care in our design studio and workshop.

Liability

We advise you to have this fixture installed by a professional. If installation is not properly maintained and therefore defects arise in, or on, the fixture, the warranty for repair will lapse. Use only the original and supplied parts during installation.

Technical specifications

COCO SUSPENSION, 120/160/200/240 cm

Dimensions: (wxdxh) 120/160/200/240 x 5,8 x 1,2 cm

Standard cable length: 200 cm

Material: natural acrylic stone translucent

Light source: LED

120 cm: 23W / 2700K / 1090 lm

160 cm: 30 W / 2700 K / 1420 lm

200 cm: 38W / 2700K / 1800 lm

240 cm: 46W / 2600K / 2160 lm

Dimmable driver: DALI or 0-10V or TRIAC

Dimmer not included

IP 20

Safety

This product is designed as (decorative) lighting and for indoor use only.

Maintenance

- Make sure that electrical contacts do not come into contact with water or moisture.
- Clean with a dustpan or soft damp cloth and use gloves to prevent hand or fingerprints.
- Do not use abrasive cleaners but PH neutral detergents.
- Never apply cleaning agents directly to the fitting.
- Always test in an inconspicuous area first.
- Applied metals and materials are coated or patinated. These materials can discolour under the influence of air and light. This is an insurmountable and natural process.

Technical problems?

Check the steps below:

- Is the supply voltage present?
- Check for loose wires.
- Is the supplied driver correctly connected?
- Have the suspension brackets shifted?

Are you still experiencing problems?

Contact your installer or dealer.

Do's & don'ts

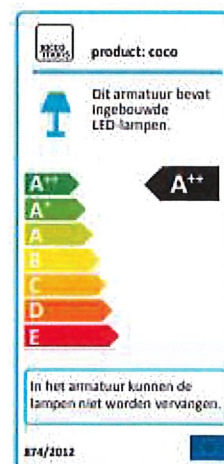
- The suspension brackets may under no circumstances be moved or shifted! This will damage the technical parts and cause your fixture to stop working
- Do not pull the fixture or apply pressure during installation and maintenance
- Prevent the fixture from bending (do not place it upright against a wall or on an uneven surface)
- Never touch the coco with your bare hands, always use gloves to prevent hand or fingerprints.

Recycle

Electrical appliances must be returned for recycling at the environmental site of your municipality.

Guarantee

Jacco Maris Design gives out a two-year manufacturer's warranty on material and manufacturing defects from the date of purchase. If a defect occurs within this time frame, you are entitled to free repair. Please contact your dealer when any defect occurs.

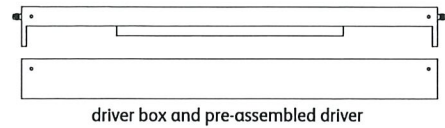
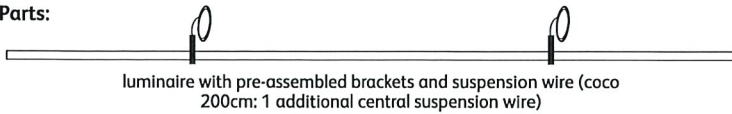


coco assembly manual

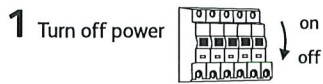
Please note: coco is delivered on a wooden surface. Remove this only after the luminaire is fully installed.



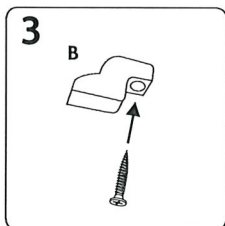
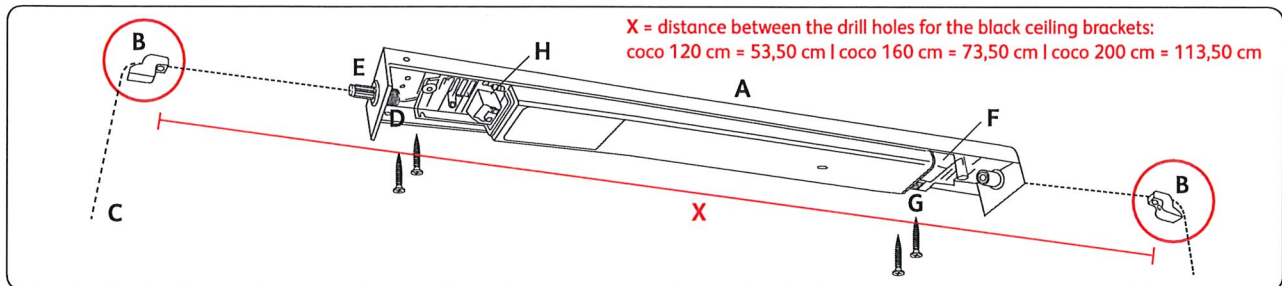
Parts:



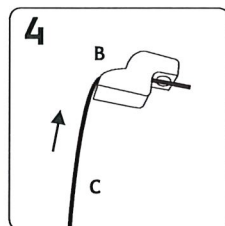
Mounting material:



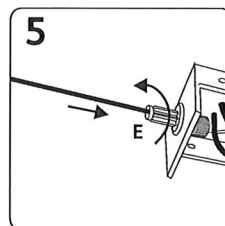
2 Place the driver box (A) where you want to install it.



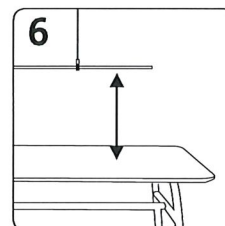
Install the black ceiling brackets (B) in line with the driver box to the ceiling (take note of distance X!)



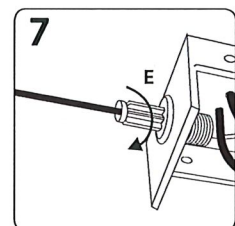
Feed the suspension wires (C) through the ceiling brackets (B) towards the driver box.



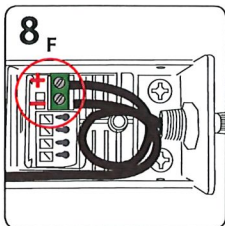
Push wires through the connectors (E). Unlock them first by loosening them.



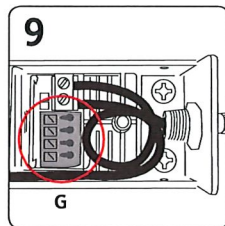
Hang coco at the desired height.



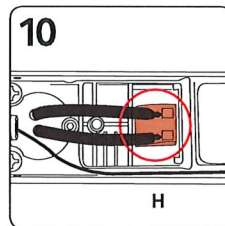
Secure the suspension wires in the connectors.



Connect the + and - to the green terminal (F) of the driver. (For Triac driver applies: red cable is + and black cable is -).

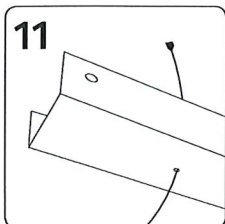


Connect the DALI or 0-10V control cable to the gray terminal (G). (not applicable for TRIAC).

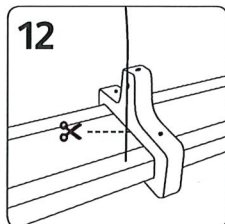


Connect the power supply to the orange terminal (H). For coco 120/160cm: go to step 14.

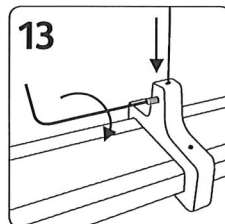
Steps 11 - 13 only apply to coco 200cm:



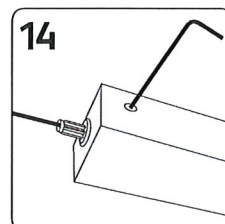
Insert the central suspension wire through the opening of the driver box.



Cut the suspension wire just above the fixture.



Insert suspension wire in the top of the black suspension bracket and secure with the black screw using the Allen key.



Close the lid of the driver box and remove the wooden surface.

