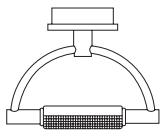
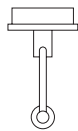


# Gradiminisoffitto led retinato



22 cm  
8<sup>5/8</sup>"



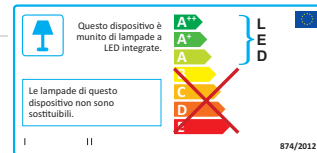
Ø 22 cm  
Ø 4<sup>3/4</sup>"

28,5 cm  
7<sup>2/4</sup>"



luminaire	
materials	steel, zama, borosilicate glass
environment	interiors
mounting location	ceiling
emission	indirect light
weight	0,6 kg
voltage	230V
ballast	dimmable electronic integrated
dimmer	phase-cut
insulation class	2
IP classification	IP20
certifications	CE  (pending)
design	Franco Bettonica, Mario Melocchi, 2990/2025

light source	
source	LED
number of led	2
power	2x6W
luminous flux	2x750 lm
colour temperature	2.800K
energy label	



## versions



**Gradiminisoffitto led retinato**  
chrome  
cod 518L



**Gradiminisoffitto led retinato**  
satin nickel-plated  
cod 520L



**Gradiminisoffitto led opalescente**  
chrome  
cod 529L



**Gradiminisoffitto led opalescente**  
satin nickel-plated  
cod 589L



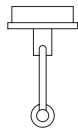
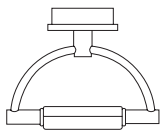
**Gradiminisoffitto led tuttopallescente**  
chrome  
cod 583L



**Gradiminisoffitto led tuttopallescente**  
satin nickel-plated  
cod 585L

# Gradiminisoffitto led

## opalescente



28,5 cm  
7<sup>2/4</sup>"

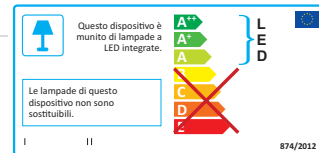
22 cm  
8<sup>5/8</sup>"

Ø 22 cm  
Ø 4<sup>3/4</sup>"



luminaire	
materials	steel, zama, borosilicate glass
environment	interiors
mounting location	ceiling
emission	indirect light
weight	0,6 kg
voltage	230V
ballast	dimmable electronic integrated
dimmer	phase-cut
insulation class	2
IP classification	IP20
certifications	CE  (pending)
design	Franco Bettonica, Mario Melocchi, 2990/2025

light source	
source	LED
number of led	2
power	2x6W
luminous flux	2x750 lm
colour temperature	2.800K
energy label	



### versions



**Gradiminisoffitto led** retinato chrome  
cod 518L



**Gradiminisoffitto led** retinato satin nickel-plated  
cod 520L



**Gradiminisoffitto led** opalescente chrome  
cod 529L



**Gradiminisoffitto led** opalescente satin nickel-plated  
cod 589L



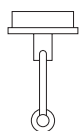
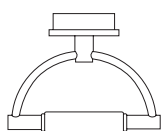
**Gradiminisoffitto led** tuttopallescete chrome  
cod 583L



**Gradiminisoffitto led** tuttopallescete satin nickel-plated  
cod 585L

# Gradiminisoffitto led

## tuttopalescente




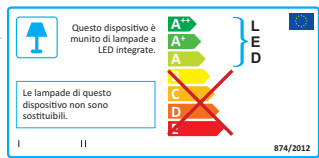
28,5 cm  
7<sup>2/4</sup>"

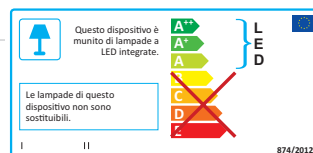
22 cm  
8<sup>5/8</sup>"

Ø 22 cm  
Ø 4<sup>3/4</sup>"



luminaire	
materials	steel, zama, borosilicate glass
environment	interiors
mounting location	ceiling
emission	indirect light
weight	0,6 kg
voltage	230V
ballast	dimmable electronic integrated
dimmer	phase-cut
insulation class	2
IP classification	IP20
certifications	CE  (pending)
design	Franco Bettonica, Mario Melocchi, 2990/2025

light source	
source	LED
number of led	2
power	2x6W
luminous flux	2x750 lm
colour temperature	2.800K
energy label	



### versions



**Gradiminisoffitto led** retinato chrome  
cod 518L



**Gradiminisoffitto led** retinato satin nickel-plated  
cod 520L



**Gradiminisoffitto led** opalescente chrome  
cod 529L



**Gradiminisoffitto led** opalescente satin nickel-plated  
cod 589L



**Gradiminisoffitto led** tuttopalescente chrome  
cod 583L



**Gradiminisoffitto led** tuttopalescente satin nickel-plated  
cod 585L