



LED Einbauspot aus Aluminium
 Oberfläche schwarz oder weiß pulverbeschichtet
 Zurückversetzte Linsen mit verschiedenen Abstrahlwinkeln
 Lichtaustrittsfläche von nur 10mm
 Perfekte Entblendung und erhöhter Sehkomfort

Recessed LED spotlight in aluminium
 White or black powder coated
 Recessed lenses with different beam-angles
 light exit field with only 10mm
 Perfect glare control and increased visual comfort

Incasso LED in alluminio
 Verniciatura a polveri in bianco o nero
 Lenti spostati indietro con varie emissioni
 Dispositivo di illuminazione di soli 10mm
 Controllo anti-abbagliamento per un elevato comfort visivo

Encastré LED en aluminium
 Vernissage à poudre en blanc ou noir
 Lentilles déplacées au fond avec d'émissions différentes
 Plus que 10mm de surface d'émission de lumière
 Contrôle anti-éblouissement et confort visuel optimal

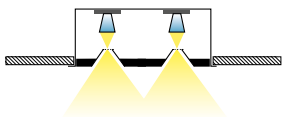
UGR<16

W2 = LED 2700K
 W3 = LED 3000K
 W4 = LED 4000K

A++ - A

IP20 CE

LFO Lens-Technology by Bartenbach



GRID LFO R EINBAUGEHÄUSE / GRID LFO R RECESSING BOX

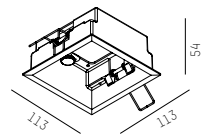
Lichteinsatz GRID separat ordern / order light insert GRID separately

629-105
 629-106

W
 S

Rahmen / trim
 Rahmen / trim

106 x 106mm
 ET 90mm
 8 - 30mm



GRID LFO R LICHTEINSATZ / GRID LFO R LIGHT INSERT

CRI >90 · Binning SDCM 3 exkl. LED Konverter · (separat ordern) / excl. LED converter (order separately)
 Einbaurahmen separat ordern / order recessed frame separately

LED 9W · 700mA

629-301243X
 629-301249X
 629-301244X

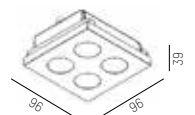
W2 130°
 W3 130°
 W4 130°

570lm
 570lm
 620lm

629-301253X
 629-301259X
 629-301254X

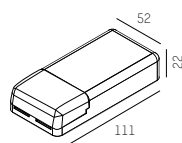
W2 155°
 W3 155°
 W4 155°

570lm
 570lm
 620lm



LED-KONVERTER / LED CONVERTER

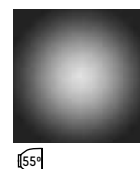
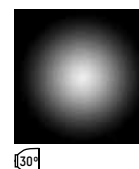
24-122201 20W / 700mA, not dimmable
 24-123400 20W / 700mA, 1-10V & PUSH dimm.
 24-151403 20W / 700mA, DALI dimm.



ARTIKELNUMMER ERGÄNZEN / COMPLETE CODE

X = FARBE/COLOUR

W white = 5
 S black = 6



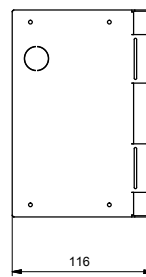
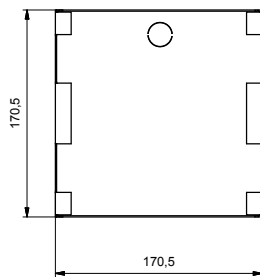


Lichteinsatz mit Justierschrauben höhenverstellbar / height-adjustable insert with adjusting screw

UNIVERSAL-BETONEINBAUEHÄUSE / UNIVERSAL CONCRETE HOUSING


Betoneinbauehäuse ohne Abdeckung aus verzinktem Blech, je eine Schlaucheinführung DM20mm links und rückseitig, **Abdeckung separat ordern**
 Recessed housing for concrete without cover, made of zinc-plated sheet, each tube insertion DM 20mm left and backside, **order cover separately**

332-1001



ABDECKUNG QUADRATISCH/ COVER SQUARE

Abdeckung inkl. Zentrierteil zu Betoneinbauehäuse 332-1001, aus verzinktem Blech, nicht für Sichtbeton geeignet
 Cover incl. centering for recessed housing for concrete 332-1001, made of zinc-plated sheet, not adapted for exposed concrete

332-1502  106 x 106mm für/for: GRID LFO recessed & GRID recessed

