

TECHNICAL DATA SHEET

200CENT SQUARE 250LM SWING 30 TRIMLESS IP20

INDOOR - INTERNO - INNENBEREICH - INTERIEUR - INTÉRIEUR - INTERIOR

Adjustable 0° - 27°

114x134 mm - h = 70 mm

Material : CALCYT® plaster



REF N° 200 BL BL
Black - Black



REF N° 200 WH BL
White - Black



REF N° 200 BL WH
Black - White



REF N° 200 WH WH
White - White

200CENT SQUARE SWING 30 250LM CRI 92

2200°K	2700°K	3000°K	4000°K
REF N° 561 27 530	REF N° 561 27 930	REF N° 561 27 830	REF N° 561 27 730

3W - 250lm - 2 Step MacAdam - **A+**
Serial wiring - - **CE** - - -
Requires remote LED driver - 1050mA
Narrowbeam 12° - Ultra low glare (UGR < 13)

REMOTE LED DRIVER ON/OFF

REF N° 697 00 015 min.2W max. 39W

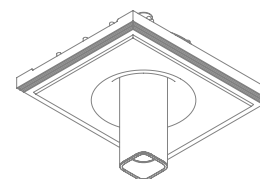
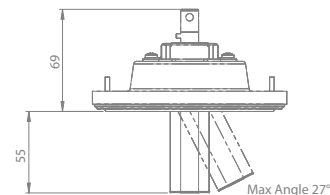
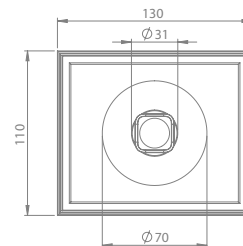
REF N° 697 00 025 min.2W max. 50W

230V/50Hz - - current controlled
 - **CE** - IP20 - 1050mA - not dimmable

REMOTE LED DRIVER DIM

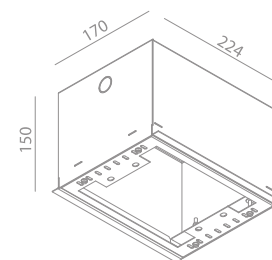
REF N° 697 60 025 min. 2W max. 60W
1-10V DALI PUSH

230V/50Hz - - current controlled
 - **CE** - IP20 - 1050mA - dimmable



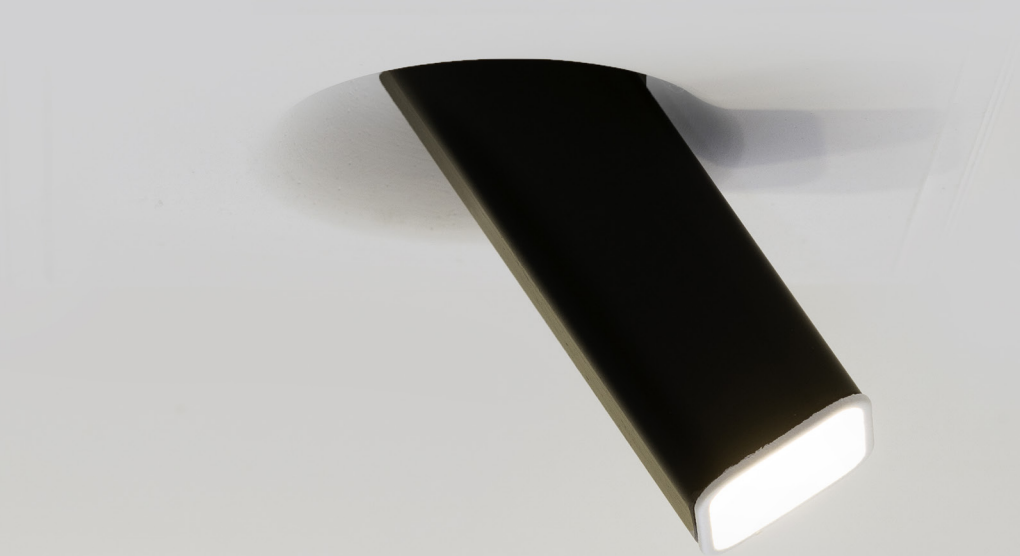
INSTALLATION KIT

STANDARD (included) installation system for ceiling 9 - 12 - 15 mm
REF N° 200 99 025 installation system for gypsum ceiling 25 mm
REF N° 200 99 030 installation system for gypsum ceiling 30 mm
REF N° 827 00 000 Concrete box 200CENT - Galvanized steel



BEAM ANGLES

STANDARD (included) beam angle 12°



TECHNICAL DATA SHEET

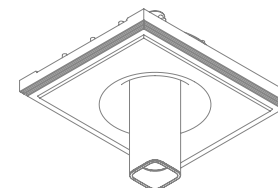
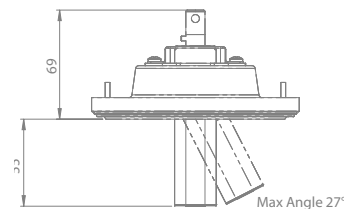
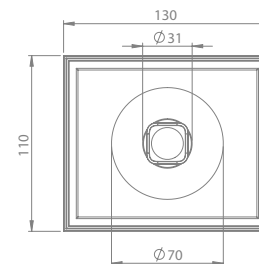
200CENT SQUARE 500LM SWING 30 TRIMLESS IP20

INDOOR - INTERNO - INNENBEREICH - INTERIEUR - INTÉRIEUR - INTERIOR

Adjustable 0° - 27°

114x134 mm - h = 70 mm

Material : CALCYT® plaster



REF N° 200 BL BL
Black - Black



REF N° 200 WH BL
White - Black



REF N° 200 BL WH
Black - White



REF N° 200 WH WH
White - White

200CENT SQUARE SWING 30 500LM CRI 92

2200°K	2700°K	3000°K	4000°K
REF N° 561 28 530	REF N° 561 28 930	REF N° 561 28 830	REF N° 561 28 730

5,9 W - 500lm - 2 Step MacAdam - **A+**
Serial wiring - - - -
Requires remote LED driver - 700mA
Perfect beam 24° - Ultra low glare (UGR < 13)

REMOTE LED DRIVER ON/OFF

REF N° 697 00 015 min.2W max. 32W

REF N° 697 00 025 min.2W max. 50W

230V/50Hz - - current controlled

- - IP20 - 700mA - not dimmable

REMOTE LED DRIVER DIM

REF N° 697 60 040 min. 3W max. 60W
1-10V DALI PUSH

REF N° 697 77 010 min. 2W max. 10W PHASE DIM

REF N° 697 77 020 min. 11W max. 20W PHASE DIM

REF N° 697 30 015 min. 2W max. 20W DALI

REF N° 697 60 015 min. 2W max. 20W 1-10V PUSH

230V/50Hz - - current controlled

- - IP20 - 700mA - dimmable

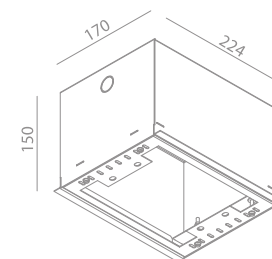
INSTALLATION KIT

STANDARD (included) installation system for ceiling 9 - 12 - 15 mm

REF N° 200 99 025 installation system for gypsum ceiling 25 mm

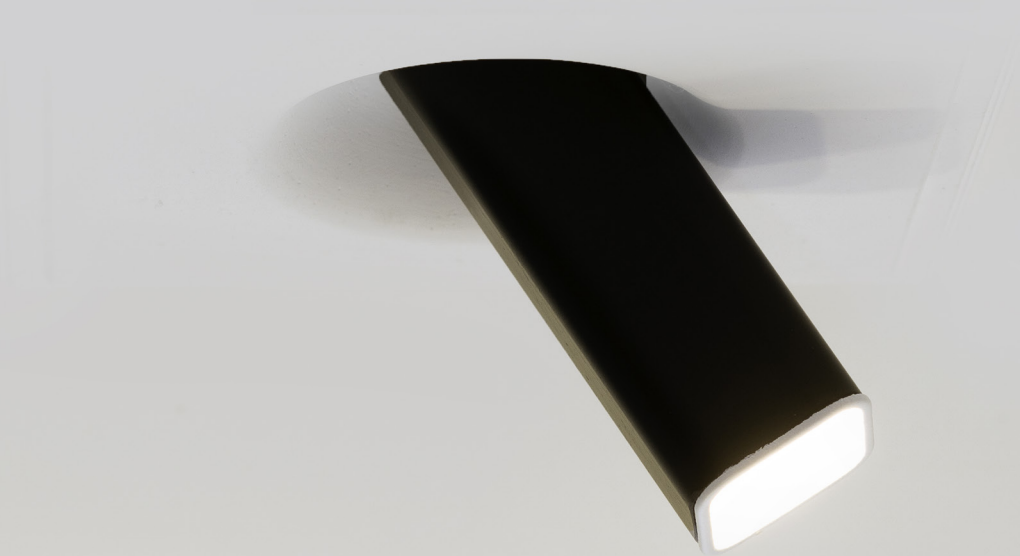
REF N° 200 99 030 installation system for gypsum ceiling 30 mm

REF N° 827 00 000 Concrete box 200CENT - Galvanized steel



BEAM ANGLES

STANDARD (included) beam angle 24°



TECHNICAL DATA SHEET

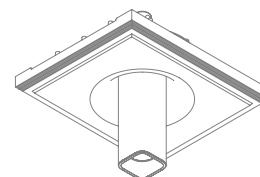
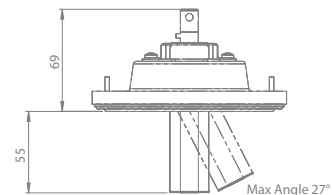
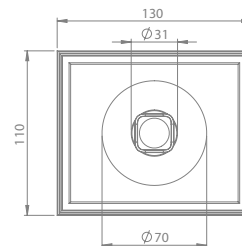
200CENT SQUARE 750LM SWING 30 TRIMLESS IP20

INDOOR - INTERNO - INNENBEREICH - INTERIEUR - INTÉRIEUR - INTERIOR

Adjustable 0° - 27°

114x134 mm - h = 70 mm

Material : CALCYT® plaster



REF N° 200 BL BL
Black - Black



REF N° 200 WH BL
White - Black



REF N° 200 BL WH
Black - White



REF N° 200 WH WH
White - White

200CENT SQUARE SWING 30 750LM CRI 92

2400°K	2700°K	3000°K	4000°K
REF N° 561 29 530	REF N° 561 29 930	REF N° 561 29 830	REF N° 561 29 730

6,2 W - 750lm - 2 Step MacAdam - **A+**
Serial wiring - - - -
Requires remote LED driver - 250 mA
Standard beam angle 36°

REMOTE LED DRIVER ON/OFF

REF N° 697 00 040 min.1W max.30W

REF N° 697 00 080 min.27W max.67W

230V/50Hz - - current controlled
 - - IP20 - 250mA - not dimmable

REMOTE LED DRIVER DIM

REF N° 697 60 040 min.3W max.30W
1-10V DALI PUSH

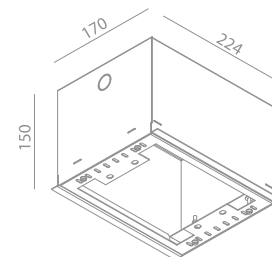
REF N° 697 60 150 min.20W max.100W 1-10V

REF N° 697 30 150 min.20W max.100W DALI

230V/50Hz - - current controlled
 - - IP20 - 250mA - dimmable

INSTALLATION KIT

- STANDARD** (included) installation system for ceiling 9 - 12 - 15 mm
- REF N° 200 99 025 installation system for gypsum ceiling 25 mm
- REF N° 200 99 030 installation system for gypsum ceiling 30 mm
- REF N° 827 00 000 Concrete box 200CENT - Galvanized steel



BEAM ANGLES

STANDARD (included) beam angle 36°

